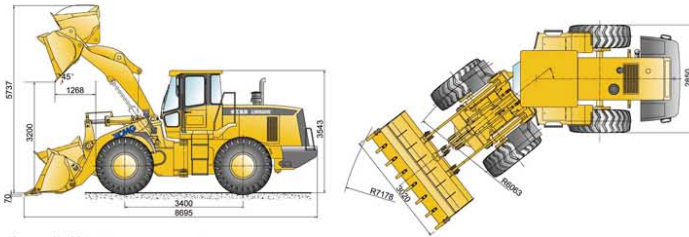


## 外形尺寸 Outline Dimensions



## 主要参数 Main Specifications

项目	Description	参数 Specifications	单位 Unit
额定斗容量	Rated bucket capacity	3.5	m <sup>3</sup>
额定载重量	Rated operating load	6000	kg
整机工作质量	Operating weight	20000	kg
最小离地间隙	Min. ground clearance	467	mm
最大牵引力	Max. horse power	171	kN
最大掘起力	Max. breakout force	201	kN
动臂提升时间	Hydraulic cycle time-raise	5.7	s
三项和时间	Total hydraulic cycle time	10.9	s
发动机	型号	Model	SC11CB240.1G2B1
	型式	Type	六缸、四冲程、涡轮增压 Six-cylinder, four-stroke, turbocharged
	标定功率	Rated power	175
	标定转速	Rated speed	2200
行驶速度	前进/倒退I档	F/R I speed	6/6
	前进/倒退II档	F/R II speed	11/11
	前进/倒退III档	F/R III speed	22/22
	前进IV档	F IV speed	36
轮胎型号	Tire model	23.5-25	

随技术进步,产品结构、参数将不断改进,恕不另行通知。样本信息与实际略有不符的,以实物为准。  
Structure and specification are subject to change without notice in case there is any difference between the description of the machine and the substantial machine, the substantial machine should govern.

### XUZHOU CONSTRUCTION MACHINERY GROUP IMP.&EXP.CO.,LTD

Add: XCMG Headquarters, Xuzhou Economic Development Zone, Jiangsu, China 221004

Tel: European & American Dept. +86-516-87739238 / 87739271

Middle East Dept. +86-516-87739252 / 87739223

Asian Dept. +86-516-87739234 / 87739233

Central Asian Dept. +86-516-87739239 / 87739235

American & Oceania Dept. +86-516-87739237 / 87739227

African Dept. +86-516-87739222 / 87739276

Fax: +86-516-87739230

E-mail: export@xcmg.com

Please contact with our district agent:

Materials and specifications are subject to change without notice.



# LW600K 轮式装载机

## WHEEL LOADER

# LW600K 高强王 FOR ROBUSTNESS

## 徐工11款装载机，专注品质，全面优化。

### 产品简介

LW600K装载机是徐工继G系列后，全力打造的新一代K系列主导机型之一。动力传动全方位弹性悬挂减振；双泵合流技术、流量放大转向，先导操纵；高强度车架适用于重载工况；徐工专有工作机构使得卸载冲击大大减轻；全液压湿式制动，作业、行驶安全可靠；可调式仪表盘，便于找到自己最佳操作位置；智能电子监控系统，准确监控整机运行状况。

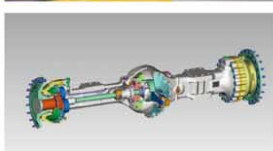
The LW600K wheel loader is one of the leading models in the K series, a new generation of wheel loaders that XCMG tries its best to build for its customers worldwide following its successful launch of the G series. Allround viscous mounts help to minimize vibration and shock to power transmission parts. Dual-pump flow converge technology, hydraulic steering with flow amplification and single pilot-operated joystick work together for easy operation. High strength frame structure for heavy-duty applications. XCMG patented Z-bar linkage minimizes dumping impact for increased productivity and reduced operator fatigue. Fully hydraulic wet-disc brake assures safe driving and operation. Adjustable instrument panel allows the cab environment to be adjusted to accommodate operator size and preference. Intelligent electronic monitoring system provides real-time data on the display for monitoring the running of the machine.

### 性能特点

#### 久经考验的部件

##### Field-proven Components

- 上柴涡轮增压柴油发动机，电启动、电熄火，高性能、低油耗，环保节能，动力强劲。
- Power is provided by a powerful engine. The six-cylinder, turbocharged engine that provides precision fuel delivery for more efficient and cleaner combustion, resulting in combined virtues of outstanding engine performance, enhanced fuel economy, reduced emissions.
- ZF电控液控变速箱提供平滑的换挡，性能先进、可靠性强；KD挡功能减少作业换挡频率，提高作业效率。
- ZF electrohydraulically controlled transmission offers soft shifting, outstanding performance and high reliability. KD function reduces the number of gearshift for enhanced productivity.
- 湿式液力驱动桥，制动器安装在驱动桥内，水和尘埃无法进入，无须维护保养，即使在松软地带或水中行走，也不影响驱动及制动效果；后桥中心摆动，减少了附加扭矩及外载荷对传动系统的冲击。
- wet-type axle with limited slip differential. Internally mounted oil-disc brakes are protected from water and dust, maintenance free, allowing for outstanding traction and braking performance even when traveling in soft terrain or under water. Oscillating rear axle absorbs additional torque and external loading impact to assure four-wheel ground contact for optimum traction and stability.



#### 卓越的性能

##### Outstanding Performance

- 双泵合流系统，液压流量放大转向，单手柄先导操纵，轻便灵活。
- Dual-pump flow converge system, hydraulic steering with flow amplification and single pilot-operated joystick work together for easy operation.
- 转向限位为液控，机械双重限位，液控限位优于机械限位，减少冲击。
- Steering is limited both hydraulically and mechanically. Hydraulic steering control takes priority over mechanical limit for reduced impact.
- 采用电磁定位技术，具有铲斗自动放平功能，减少驾驶员的工作强度，提高工作效率；具有动臂举高限位功能，防止机械冲击，减少驾驶员疲劳感。
- Electromagnetic positioning technology provides easier bucket and boom control. Bucket positioner maintains automatic bucket levelling for increased productivity while the boom kickout device stops the boom at preset height automatically to protect the operator from mechanical impact for reduced operator fatigue.
- 长轴距，铰接中心对中布置，整机稳定性好。前后车架中心铰接轴设计久经考验，车架有整强筋，即使在崎岖不平的路面，也能承受反复扭曲。
- Long wheelbase and center point frame articulation provide good machine stability. Field proven center pivot bearing design and robust frame structure work together for repeated twisting resistance in rough terrain.



转向双重限位 Fully hydraulic wet-disc type brake

电磁限位 Solenoid Kickout

#### 安全、可靠的制动

##### Safe And Reliable Braking

- 全液压湿式制动，紧急制动与驻车制动二合一，保障作业行车安全。
- Service brake is of fully hydraulic wet-disc type. Parking brake and emergency brake in one activation to assure maximum driver safety.
- Bosch Rexroth制动元件提高了系统的可靠性。
- Bosch Rexroth brake components deliver increased reliability.



力士乐制动元件 Rexroth Braking Components

#### 可靠的结构强度

##### Robust Structure

- 注重整体结构强度，通过有限元分析方法，减少应力集中部位，消除局部薄弱之处，确保满足各类繁重工况。
- The machine features robust frame structure for outstanding durability in demanding loading conditions. Advanced processes like finite element analysis are incorporated throughout the design to minimize stress concentrations and eliminate local structural weaknesses.



#### 舒适的操作环境

##### Comfortable Operator Environment

- 分体式新型驾驶室，视野开阔、密封减振，配备冷暖空调、收录机、四方位可调节座椅，操作环境舒适、安全，是人机和谐的充分体现，操作员尽享舒适的同时，工作效率大为提升。
- Isolation mounted, the new enclosed cabin features maximum visibility, ergonomically positioned controls, four-way adjustable seat, radio and cassette recorder, cooling and heating air-conditioning. Safe and comfortable operator environment achieves a great harmony between human and machine. The operator becomes more productive and efficient in ultimate comfort.
- 转向柱与仪表盘为一体可倾斜式，任何人只需一根操纵杆便能改变转向柱倾角，找到自己最佳位置，而一字型仪表盘设计，更清晰地观察到监控器上的信息，把握车辆状态变得一目了然。
- One-piece steering column and instrument panel allows easy adjustment and can be tilted to accommodate operator size and preference. Unique instrument panel design with easy-to-read gauges allows the operator to have a clear view of the information on the monitor for a full understanding of the running of the machine.
- 新型监控系统使操作员通过控制面板上显示的信息，对机器进行实时监控。
- New monitoring system allows the operator to monitor machine operation via real-time data on the messenger display.



冷暖空调 Heating and Air-conditioning

收录机 Radio

#### 方便的维护性

##### Easy Serviceability

- 集中注油，使得维护保养人员在地面即可达到保养点，省去了爬高就低，效率更高。
- 引擎盖侧板及后护罩开闭容易，发动机及其周围零件的检查、日常保养变得非常方便。
- Grouped grease fittings are easily accessible from the ground level for greater efficiency.
- One-touch open-up side grilles and radiator grille provide easy access to the engine and other parts in the compartment for checks and daily maintenance.



可开启护罩 Opening Grille

集中注油 Grouped Grease Fittings