



XCMG FOR YOUR SUCCESS

XGC17000

CRAWLER CRANE



Add: No.19 Taoshan Road, Economic development zone of jinshanqiao,Xuzhou,Jiangsu Province,China

Postal Code: 221004

Unified service hotline: 86 400-110-9999

Sales Hotline

Sale Tel: 86 0516-87892094

Sale Fax: 86 0516-87892074

E-mail: jyyld@xcmg.com

Quality Supervision Tel: 86 0516-87892587

Service Hotline

Service Tel: 86 400-001-5678

Service Fax: 86 0516-87892080

Service Tel: 86 0516-87892086

Service Fax: 86 0516-87892083



Welcome to Xuzhou Industry and Commerce City
One-stop shop for worry-free and money-saving



Welcome to follow XCMG crawler crane official WeChat
1. Direct number "XCMG" to add friends.
2. Find the public account "Xuzhou Crawler Crane"
3. Directly scan the QR code above

—April 2022 edition—

Note: Due to the need for continuous product improvement, we reserve the right to make changes to product models, parameters, and configurations without prior notice.



CONTENTS

目录

P02	<ul style="list-style-type: none">• Parts and system description• Safety Protection Measures• Main Technical Parameters
P09	<ul style="list-style-type: none">• Working conditions• 1. XGC17000 Working range in standard heavy boom working condition• 2. XGC17000 Working range in superlift heavy boom working condition• 3. XGC17000 Working range in standard light boom working condition• 4. XGC17000 Working range in superlift light boom working condition• 5. XGC17000 Standard tower jib working condition• 6. XGC17000 Superlift tower jib working condition• 7. XGC17000 Superlift heavy special jib working condition• 8. XGC17000 Superlift light special jib working condition• 9. XGC17000 Standard wind power jib working condition• 10. XGC17000 Superlift wind power jib working condition• 11. XGC17000 Working range in superlift single/double boom working condition• 12. XGC17000 Working range in superlift single/double wind power jib working condition
P53	<ul style="list-style-type: none">• Transport Plan

02

XGC17000 CRAWLER CRANE

P03–P04 Parts and system description

P05–P06 Safety Protection Measures

P07–P08 Main Technical Parameters

Parts and system description



Highlights of the crane

- ◆ High performance: large chassis, large cross-section boom, the comprehensive performance of crane is the strongest among the same tonnage products.
- ◆ High efficiency: detachable superlift counterweight tray allows quick boom and operation conversion; when there is no load, the crane can slewing with superlift counterweight off the ground, the lifting of turbine is more efficient.
- ◆ High adaptability: configured with heavy boom, light boom, luffing jib and special jib, optionally configured with wind power jib and double boom working conditions, the crane has a wide range of application.
- ◆ High reliability: the crane is developed on the basis of more than 10 years' experiences of XCMG thousand tonnage products, the technology is mature and the reliability is very high.

Boom combinations

Standard working conditions include heavy boom, light boom, tower jib and wind power jib. Superlift working conditions include heavy boom, light boom, tower jib, heavy special jib, light special jib, wind power jib, superlift single/double boom, and superlift single/double wind power jib. This crane has a wide range of application.

Boom compositions of above 10 working conditions of XGC17000 crawler crane are as follows (single/double boom working condition are not included):

Name	Boom butt	6m boom insert (standard)	6m boom transition section	12m boom insert (standard)	10.5m boom transition section	Boom top
Qty.	1	1	1	8	1	2
Name	Tower jib butt	6m tower jib tapered section	6m tower jib insert (standard)	12m tower jib insert (standard)	Tower jib top	
Qty.	1	1	1	7	1	

机构组成

See the following table for the configuration and use of the mechanisms of the crane.

Mechanism	Function	Position
Main hoist winch	Used for the lifting operation of boom, fixed jib and tower jib	Turntable slewing center
Aux. hoist winch	Used for the lifting operation of boom, fixed jib and tower jib	Behind main hoist winch
Single top winch	Used for the lifting operation of boom and tower jib single top	Boom 6m winch section
Boom luffing winch	Used for boom luffing	Middle and rear part of turntable
Tower jib luffing winch	Used for tower jib luffing	Boom 6m winch section
Superlift luffing winch	Used for superlift boom luffing	Superlift mast winch section
Slewing gear	Used for superstructure slewing	Front of turntable
Travel gear	Used for crane travel	Crawler drive sprocket
Reeving winch	Assist the rope reeving for hoist and luffing winches	Front of turntable

Hoist winch

Main and aux. hoist winches have the same model and driven independently. They can work synchronously for heavy load lifting. Hoist winches adopt constant-closed disc brake, built-in reducer and variable displacement drive motor. The two winches use box frame, pin shaft is used to connect them to turntable, easy for assembly.

Luffing winch

Boom luffing winch is driven independently by a twin drum. The system is set with ratchet device, built-in reducer and constant-closed disc brake.

Slewing gear

Slewing gear is arranged in front of turntable and externally meshed with slewing bearing; it has three planetary reducers, with hydraulic buffering and free swing function. Planetary reducer and controllable constant-closed disc brake make the crane reliable in work and easy for maintenance.

Slewing bearing

The three-row roller type slewing bearing from Rothe Erde are externally meshed, with features of high strength, large bearing capacity and easy maintenance.

Travel mechanism

The two crawler tracks are set symmetrically. They can be operated synchronously or separately to realize straight travel and turning around. Each crawler track is driven by two travel reducers. It can travel with 100% rated load, and crawler tightness is adjusted through hydraulic cylinder.

Oil cylinder assembly

To achieve the self-assembly and disassembly function, the connection between boom and turntable and the connection between car-body and track frame are realized by the use of power pin. This crane is equipped with mast raising cylinder, counterweight lifting cylinder and outrigger cylinder, the operator's cab is also set with cab tilting cylinder and cab rotation cylinder.

Operator's cab

Operator's cab is ergonomically designed. With safety glass and protective guard, it is safe and comfortable. The window is installed with sun shield; the cab is equipped with sliding door, adjustable seat and air conditioner.

When the crane is in transport, the cab can be turned for 90° to turntable front side (boom butt is removed) to reduce the transport length.

The cab can be tilted upward for 20° to observe the operation high above the ground.

Hydraulic system

It adopts closed electric proportional pilot variable pump control system, the system is stable with good speed adjustment.

Main/aux. hoist system, main/aux. luffing system, travel system and slewing system are all closed pump control systems. Without balance valve and direction change valve, the transmission is stable without impact. Boom luffing has double pump confluence function.

For main hoist, aux. hoist and travel systems with large speed regulation range, variable motor drive is adopted. The combination of variable motor and variable pump control system can achieve accurate control of the movement speed, with good fine motion performance.

Main hydraulic components are imported.

Fuel tank capacity: about 1850L.

Electrical system

Electrical system mainly includes the following parts: engine control, monitoring instruments, auxiliary equipment, hydraulic system control, load moment limit and safety monitoring, etc.

Conventional electrical system adopts 24V parallel circuit, and the wiring of each electrical equipment adopts single wire system. The system includes power supply, starting control, engine control and status monitoring, cab air conditioner and stereo, illumination (lighting), wipers, interphone, etc.

The PLC control system includes the control of main winch, aux. winch, slewing, boom luffing, left/right travel and the rotation and tilting of operator's cab. All movements are controlled by electric-hydraulic proportional control technology. Through PLC logic control, it can effectively ensure the realization of all functions of the crane, and fully reflect the people-oriented design concept.

Engine system

Manufacturer: Cummins QSK23;

Rated power: 641kw/2100rpm;

Max. output torque: 3776N.m;

Structure type: 6-cylinder in line, water-cooling, turbocharged and inter-cooled, and electronic injection diesel engine;

Fuel tank capacity: about 1000L.

Hook block configuration

Name	1250t	1000T	500t	300t	150T	65T	25T
Dead weight (t)	44	24.5	12	8	7.0	3.7	1.6
Qty.	1	1	1	1	1	1	1
Number of pulley	32	24	12	6	3	1	0
Remark	Optional		Optional	Optional			

Note: 1250t hook block is a combined hook, it can be disassembled into 650t hook or 350t hook; 1000t hook block is a combined hook, it can be disassembled into 500t hook or 250t hook.

Counterweight

Car-boy counterweight is 90t, turntable counterweight is 268t, superlift counterweight is 480t. All counterweights are designed for easy disassembly and assembly to improve the efficiency.

Centralized lubrication system

Progressive centralized lubrication system is controlled by computer programming. It can refill lubricating oil automatically point by point, so as to ensure that each point is lubricated sufficiently and make the crane maintenance more easy and convenient.

Safety Protection Measures

The safety devices include load moment limiter, turntable slewing lock pin, boom backstop device, hoist height limiter, anemometer, level gauge, hydraulic system overflow valve, balance valve, hydraulic two-way lock, slewing warning device, travel warning device and etc.

Emergency function

When system program breakdown occur, the rocker switch in control cabinet can be used to operate the crane to a safe state. At this moment, all safety devices are disabled.

Load moment limiter

The load moment limiter is developed through the cooperation of WIKA and XCMG, with advanced microprocessor technology which is specially customized for us, it has the features of low power consumption, strong function, high sensitivity and convenient operation.

Detection function: LMI can automatically detect parameters such as boom angle and lifting weight.

Display function: use large-screen color LCD display to show important parameters in lifting operation through text and graphics, such as load moment percentage, actual lifting weight, rated lifting weight, radius, boom length, angle, maximum lifting height, working condition code, parts of line, limit angle and error code.

Warning function: with complete pre-alarm and overload stop function. If it is detected that the actual weight exceeds the rated lifting capacity or boom angle exceeds the maximum value, LMI will send alarm and limit the current movement of the crane.

Main/aux. winch rope over-wind protective device

When main or aux. winch hoists up to a certain height, the over-wind warning light on display will be on, and load moment limiter will stop hoisting up movements at the same time.

Main/aux. winch rope over-release protective device

When the proximity switch inside the drum detects that there are only three loops of rope left on winch, the over-release warning light on display will be on, and load moment limiter will stop the movement of lowering down at the same time.

Safety protection switch

This switch is placed in front of the handle. When the switch is not pressed, all movement signals are shielded and the handle cannot work. This switch is set to prevent mis-operation caused by unintentional contact when getting on or off the crane.

Ratchet locking device

This function is used to lock the luffing winch. The device must be opened when lowering boom, otherwise it cannot be lowered. It is used to protect the safety of the boom when it is out of service, and the ratchet state is shown on the display.

Boom angle limit

When boom angle reaches the upper limit, boom raising will be stopped; when boom radius is beyond the working range, boom lowering will be stopped.

The upper and lower limit of tower jib is controlled by limit switch.

Monitoring system

It is composed of four cameras and two monitors, used to monitor main winch, aux. winch, tower jib luffing winch, superlift luffing winch and superlift counter-weight.

Sound and light alarms

When crawler crane is moving and slewing, there is light and sound for warning.

Tricolor warning lamp

The lamp comprises three colors. When crane loading is below 90% of the rated capacity, the "green light" is on to indicate that the crane is operating in a safe area; when crane loading is below 90%~100% of the rated capacity, the "yellow light" is on to indicate that the crane is close to the rated load; when crane loading exceeds 100% of the rated capacity, both "red light" and "yellow light" will be on to indicate that the crane is overloaded and in the dangerous area, the control system will automatically cut off crane movement to dangerous direction.

Illumination light

There is illumination light at front of turntable, on boom and inside the cab for night operation.

Height Mark Lamp

It is located on boom tip for high level operation warning.

Anemometer

It can detect the current wind speed and send signal to the monitor in operator's cab to remind the operator for safe operation in wind load. The anemometer is imported from Hirschmann, with more stable performance and more accurate speed measurement.

Lightning protection system

It includes lightning protection grounding device and surge protection device, which can effectively prevent the damage to electrical system components and workers when lightning strikes.

Remote monitoring system

A monitoring center can be established according to the user's requirements to monitor the crane state; it can monitor and analyze the operation data, so as to diagnose the fault remotely and solve the problem in time.

Safety control technology

It can lower the slewing speed automatically according to boom length, which is much safer;

Flexible safety protection: it can lower the speed of crane movements when it is approaching to the safety limit, which is more stable and reliable.

It can monitor the hydraulic oil temperature in real time and limit the movement according to the oil temperature to protect the hydraulic components.

Electronic level gauge

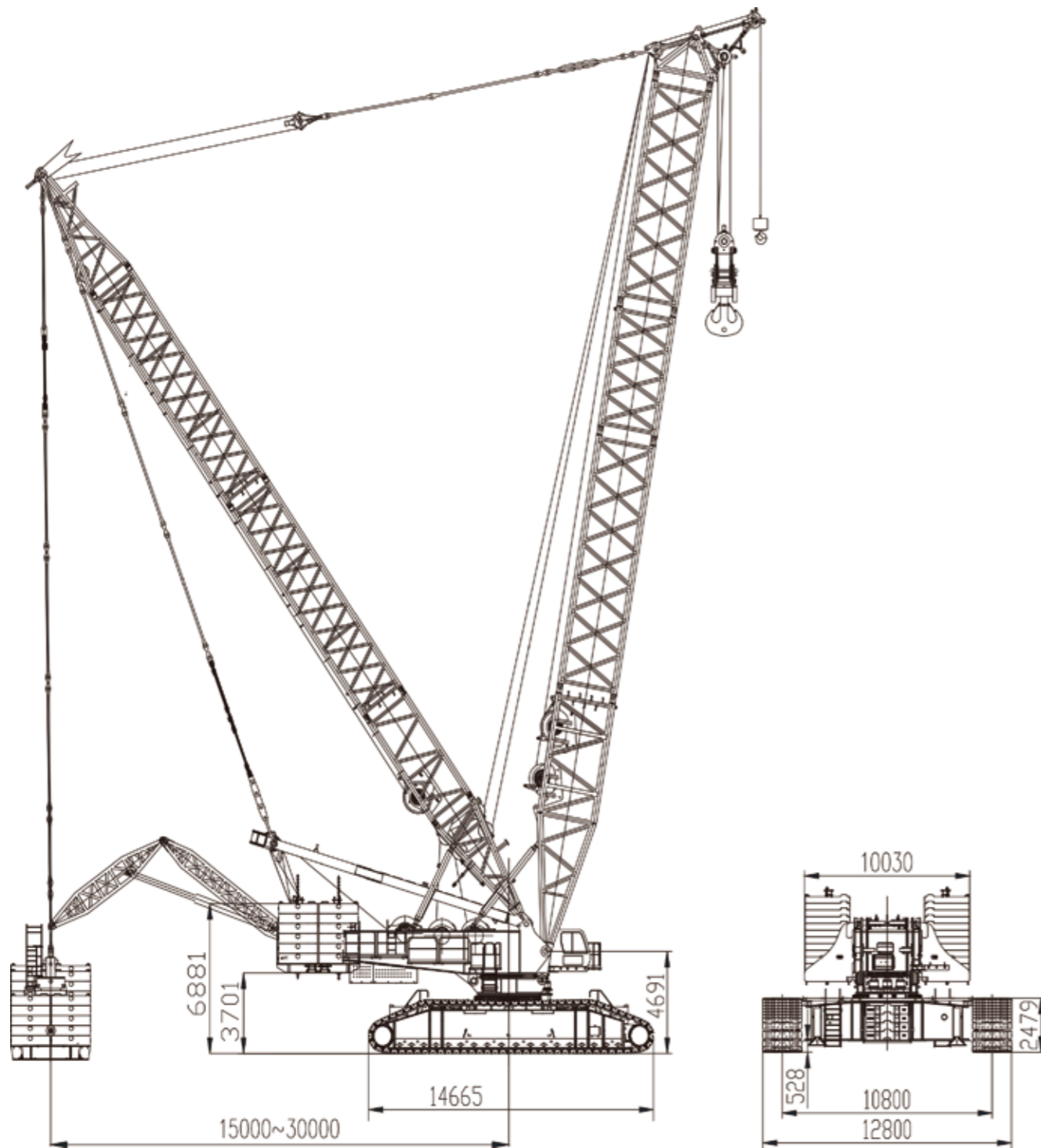
The level gauge will show the inclination angle of the crane in real time on display, so as to ensure the safe running of the machine.

Hook latch

All lifting hooks are equipped with retaining plate to prevent the rope from falling off.

Main Technical Parameters

外形尺寸



XGC17000 crawler crane outline dimension

主要技术参数

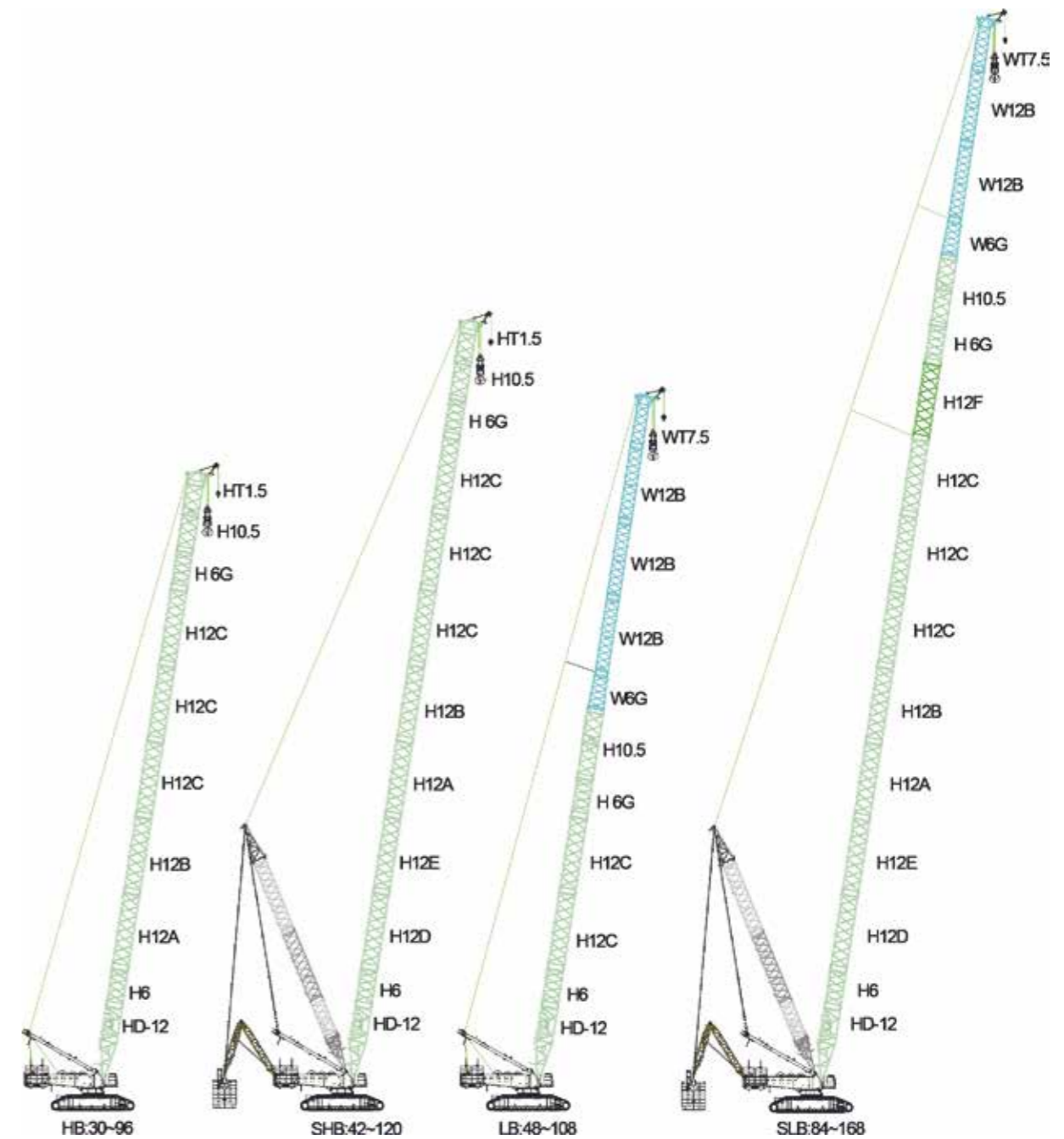
Item	Unit	Data	
Max. lifting capacity	t	1250	
Max. load moment	tm	17000	
Superlift working condition	Heavy boom length	m	42~120
	Light boom length	m	84~168
	Wind power jib (optional)	m	90~168+12
	Superlift single/double boom (optional)	m	90~162
	Superlift single/double wind power jib	m	90~162+12
	Superlift tower jib	m	(48~96)+(30~108)
	Superlift special jib	m	(48~114)+18
Performance of typical working conditions (optional)	Wind power jib (144+12) : weight × radius	t × m	200 × 30
	Single/double wind power jib (144+12): weight × radius	t × m	240 × 30
	Adaptability to wind power conditions	—	Superlift counterweight can be lifted off the ground when there is no load
Superlift mast length	m	42	
Gradeability	%	30	
Turntable counterweight	t	268	
Car-body counterweight	t	90	
Superlift counterweight	t	480	
Superlift luffing range	m	15~30	
Track gauge × track length × track shoe width	mm	10800 × 14665 × 2000	
Engine power	kW	641	
Crane weight (30m heavy boom, 1000t hook block)	t	820	
Max. transport weight of single unit (basic machine)	t	59	
Max. dimension weight of single unit (basic machine) (L × W × H)	m	15.5 × 3.4 × 3.12	
Hoist winch max. single line speed (no load, the 10th layer)	m/min	130	
Boom luffing winch max. single line speed (no load, the 9th layer)	m/min	53 × 2	
Max. slewing speed	r/min	0.9	
Max. travel speed	km/h	0.8	

Working conditions

09

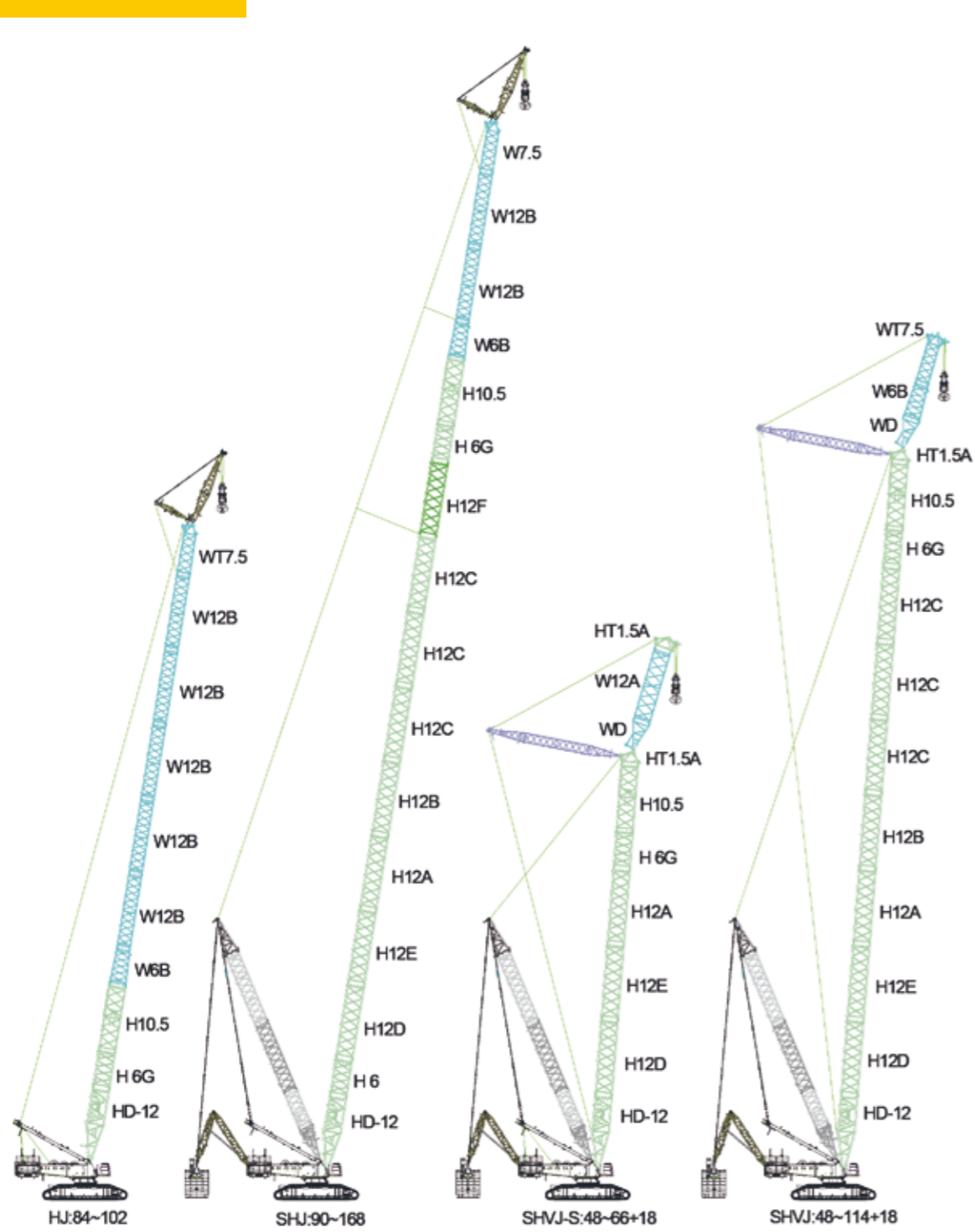
XGC17000 CRAWLER CRANE

- P10-P12 Working conditions
- P13-P14 1. XGC17000 Working range in standard heavy boom working condition
- P15-P17 2. XGC17000 Working range in superlift heavy boom working condition
- P18-P19 3. XGC17000 Working range in standard light boom working condition
- P20-P22 4. XGC17000 Working range in superlift light boom working condition
- P23-P28 5. XGC17000 Standard tower jib working condition
- P29-P36 6. XGC17000 Superlift tower jib working condition
- P37-P38 7. XGC17000 Superlift heavy special jib working condition
- P39-P41 8. XGC17000 Superlift light special jib working condition
- P42-P43 9. XGC17000 Standard wind power jib working condition
- P44-P46 10. XGC17000 Superlift wind power jib working condition
- P47-P49 11. XGC17000 Working range in superlift single/double boom working condition
- P50-P52 12. XGC17000 Working range in superlift single/double wind power jib working condition

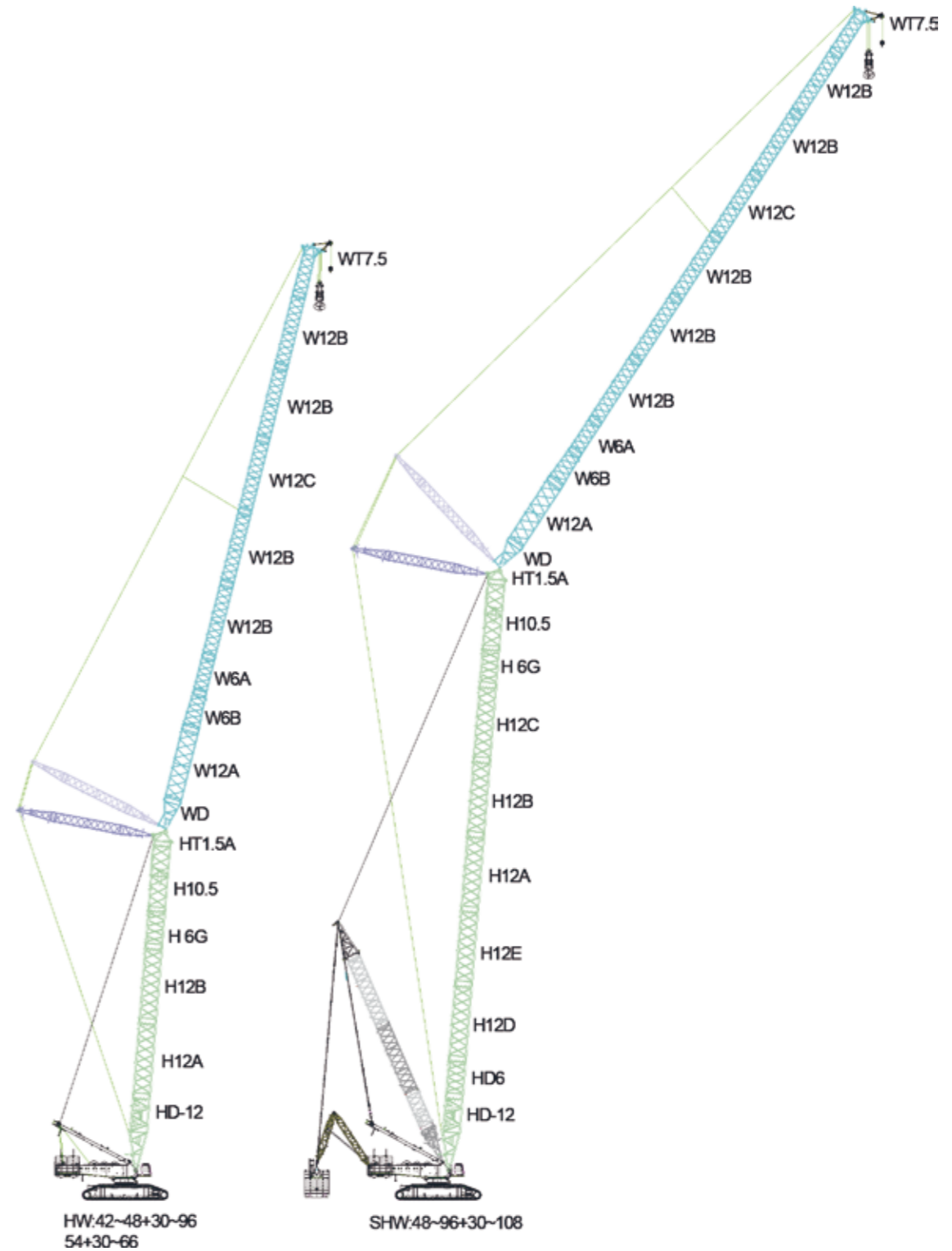


Working conditions	Boom combinations	Length/m
HB	9 boom sections + 1 boom top	30-96
SHB	11 boom sections +1 boom top	42-120
LB	6 boom sections +4 tower jib insert +1 tower jib top	48-108
SLB	12 boom sections +3 tower jib insert +1 tower jib top	84-168

Working conditions



Working conditions	Boom combinations	Length/m
HJ	3 boom sections+6 tower jib insert+1 tower jib top+12m jib	84-102
SHJ	12 boom sections+3 tower jib insert + tower jib top +12m jib	90-168
SHVJ-S	6 boom sections+2 boom top+2 tower jib insert + tower jib rear strut	48-66
SHVJ	10 boom sections+1 boom top +2 tower jib insert +1 tower jib top + tower jib rear strut	48-114



Working conditions	Boom combinations	Length/m
HW	5 boom sections+1 boom top +9 tower jib insert+1 tower jib top + tower jib front strut + tower jib rear strut	42-48+30-96 54+30-66
SHW	9 boom sections+1 boom top+10 tower jib insert +1 tower jib top + tower jib front strut + tower jib rear strut	48-96+30-108

Lifting capacity tables in typical working conditions

1. XGC17000 Working range in standard heavy boom working condition

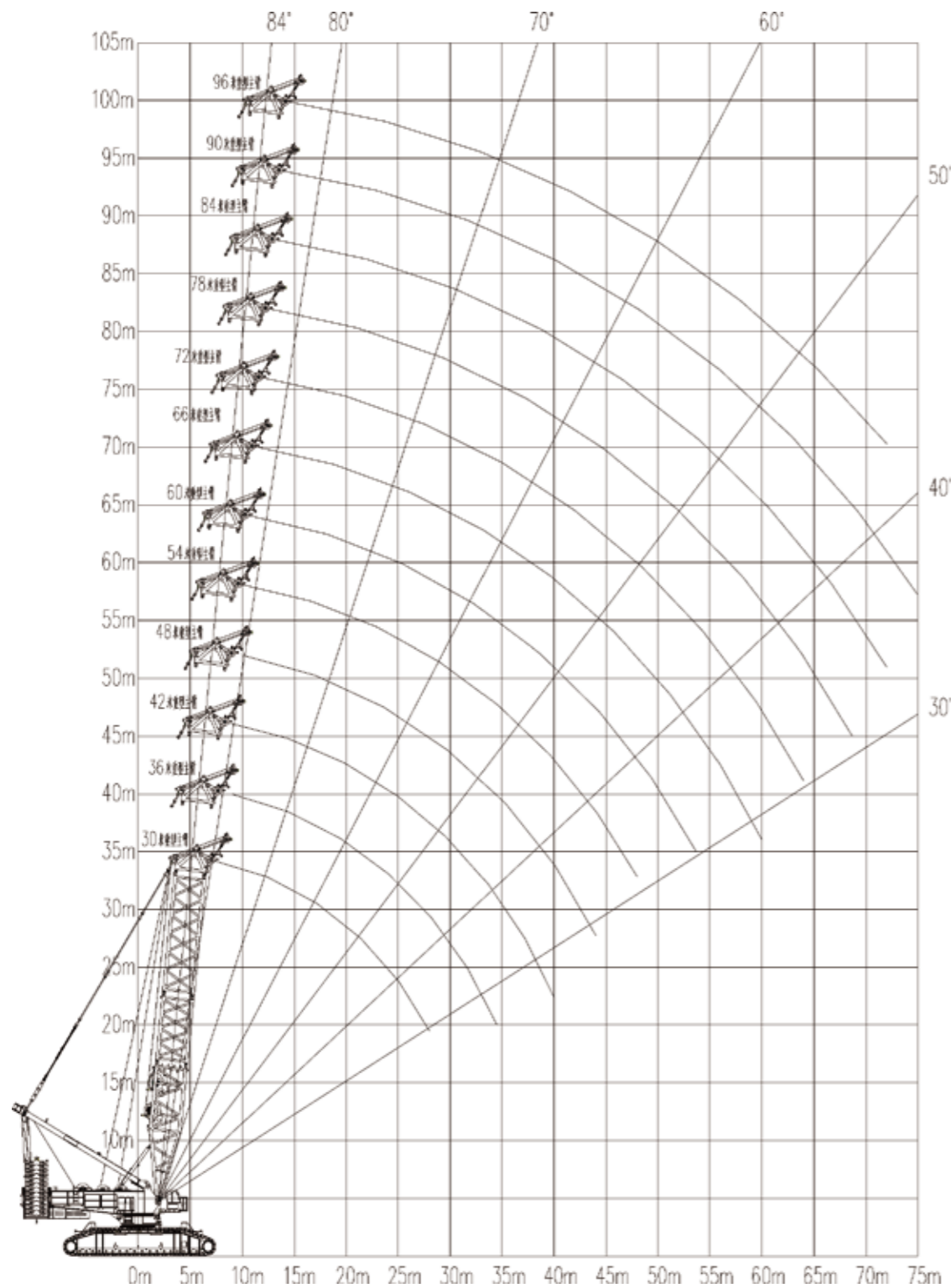


Table 1-1 XGC17000 Lifting capacity tables in standard heavy boom working condition (268t turntable counterweight+90t car-body counterweight)

Boom length(m)	30	36	42	48	54	60	66	72	78	84	90	96
Radius(m)												
7	826											
8	726	724	722									
9	647	645	643	641	639							
10	577	576	575	573	572	572						
11	518	516	515	513	512	512	512	510				
12	469	467	466	464	462	462	463	460	459	456		
13	427	426	425	423	421	421	421	419	418	415	414	411
14	392	391	390	388	386	386	386	384	382	380	378	376
15	362	361	360	357	356	356	356	353	352	349	348	345
16	336	334	334	331	330	329	330	327	326	323	322	319
17	313	311	311	308	307	306	307	304	303	300	298	296
18	292	291	290	288	286	286	286	284	282	279	278	275
19	274	273	272	270	268	268	268	265	264	261	260	257
20	258	256	256	253	252	252	252	249	248	245	243	240
22	230	228	228	225	224	224	224	221	220	217	215	212
24	206	205	204	202	201	200	201	198	196	194	192	189
26	186	185	185	183	181	181	181	178	177	174	172	169
28	169	169	168	166	164	164	164	162	160	157	156	153
30		154	154	151	150	150	150	147	146	143	141	138
32		141	141	139	137	137	137	134	133	130	128	125
34		130	130	128	126	126	126	123	122	119	117	114
36			120	118	116	116	116	114	112	109	107	104
38			111	109	107	107	108	105	103	100	99	96
40				101	99	99	100	97	95	92	91	88
42				93	92	92	92	90	88	85	84	81
44				87	85	85	86	83	82	79	77	74
46					79	79	80	77	76	73	71	68
48					74	74	74	72	70	67	66	63
50						69	69	67	65	62	61	58
52						64	65	62	61	58	56	53
54						60	60	58	56	53	52	49
56							56	54	52	49	48	45
58							53	50	49	46	44	41
60							49	46	45	42	41	38
64								40	39	36	34	31
68									33	30	29	26
72										25	24	

Lifting capacity tables in typical working conditions

2. XGC17000 Working range in superlift heavy boom working condition

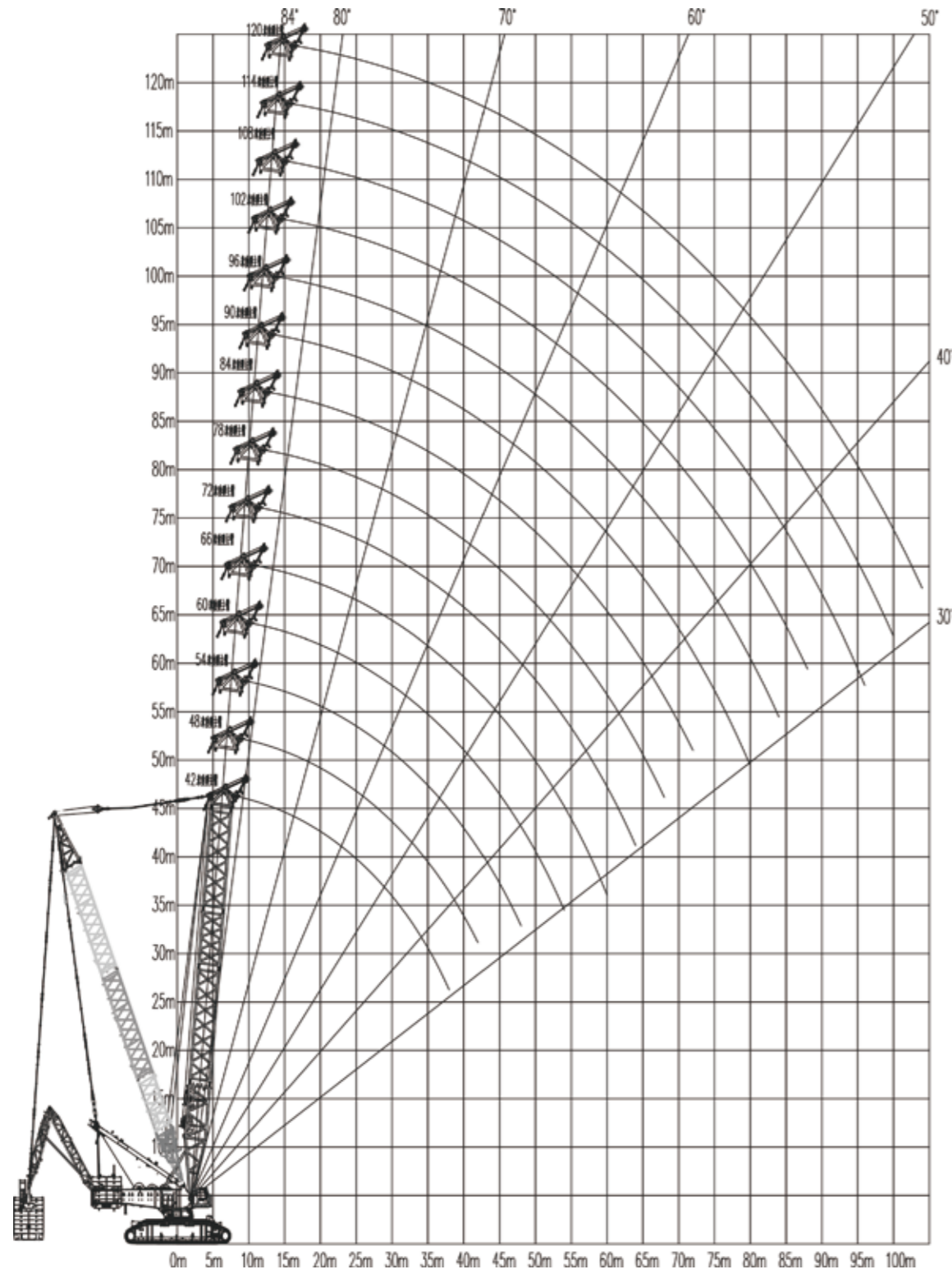


Table 2-1 XGC17000 Lifting capacity tables in superlift heavy boom working condition (268 turntable counterweight + 90t car-body counterweight + 480t superlift counterweight, superlift counterweight radius 30m)

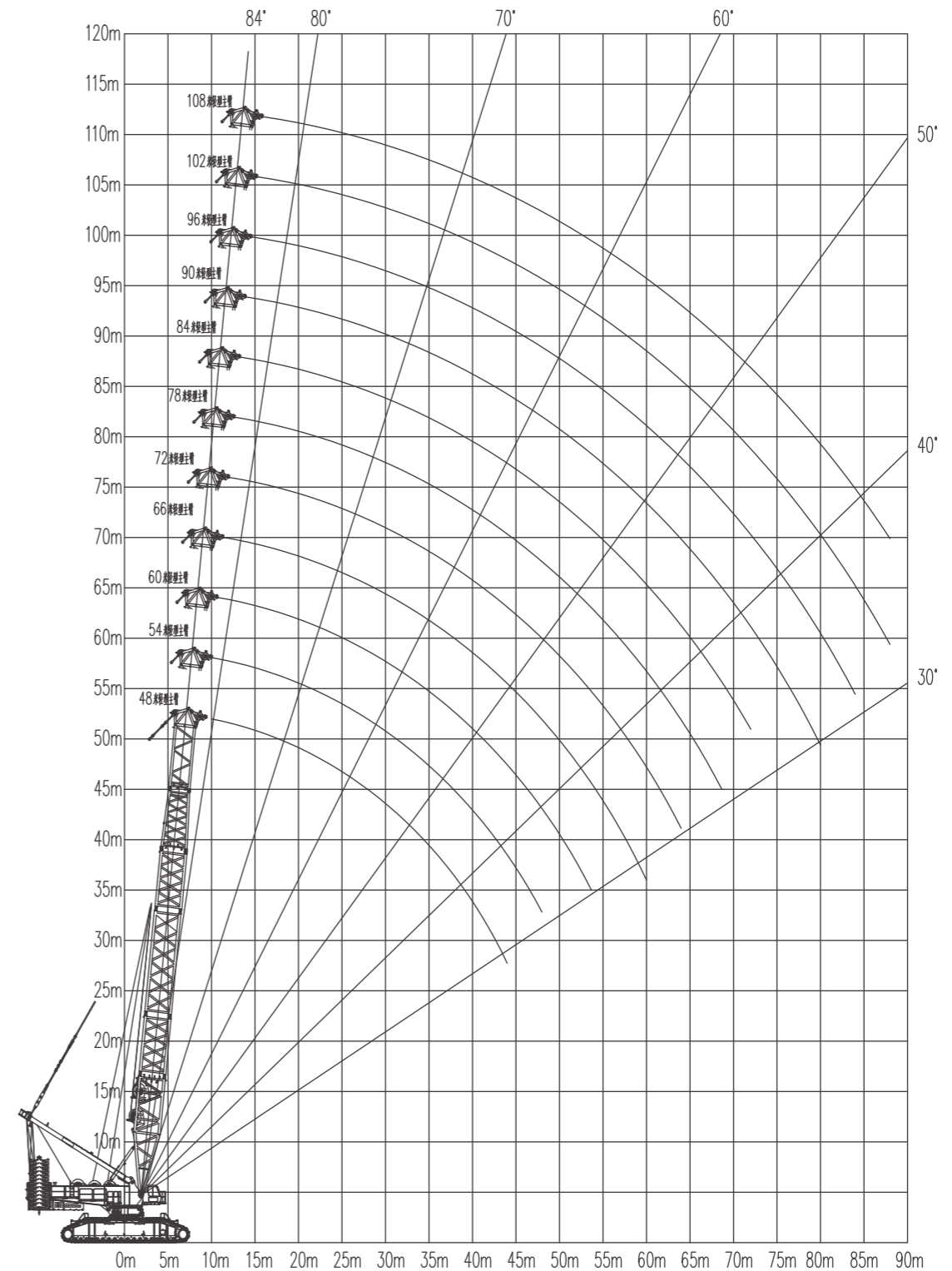
Boom length(m)	42	48	54	60	66	72	78
Radius(m)							
10	1250	1196	1044	930			
11	1250	1196	1044	930	861	791	
12	1250	1196	1044	930	861	791	754
13	1240	1196	1044	930	861	791	754
14	1222	1196	1044	930	861	791	754
15	1141	1138	1044	930	861	791	754
16	1070	1067	1044	930	861	791	754
17	1007	1004	1003	930	861	791	754
18	951	948	946	930	861	791	754
19	900	897	896	889	861	791	754
20	855	852	850	843	842	791	754
22	775	772	771	764	763	760	754
24	709	706	704	698	697	694	692
26	652	650	648	642	641	638	636
28	598	601	599	594	592	589	587
30	543	559	557	551	550	547	545
32	494	522	522	514	513	510	508
34	450	486	486	485	485	478	476
36	409	455	454	453	453	451	450
38	370	420	426	425	424	422	421
40		387	401	399	399	397	396
44		323	357	356	355	353	352
48			310	319	319	317	316
52				289	288	286	285
56					262	260	259
60					240	238	237
64						218	217
68							200

典型工况起重性能表

Table 2-1 XGC17000 Lifting capacity tables in superlift heavy boom working condition (268t turntable counterweight + 90t car-body counterweight+ 480t superlift counterweight, superlift counterweight radius 30m)

Boom length(m)	84	90	96	102	108	114	120
Radius(m)							
12	680						
13	680	642	604				
14	680	642	604	562			
15	680	642	604	562	506	434	
16	680	642	604	562	506	434	395
17	680	642	604	562	506	434	395
18	680	642	604	562	506	434	395
19	680	642	604	562	506	434	395
20	680	642	604	562	506	434	395
22	680	642	604	562	506	434	395
24	680	642	604	562	506	434	395
26	633	632	604	562	506	434	395
28	584	583	568	545	506	434	394
30	542	541	534	513	496	432	392
32	505	504	501	485	469	430	390
34	473	471	468	460	445	428	388
36	448	442	439	437	423	408	385
38	419	419	416	416	403	389	373
40	394	393	391	390	385	371	356
44	350	349	347	346	347	340	326
48	313	313	310	309	311	309	301
52	283	282	280	279	280	279	276
56	257	256	254	253	254	253	250
60	234	234	231	230	231	230	227
64	215	214	212	210	212	210	208
68	197	197	194	193	194	193	190
72	182	181	179	178	179	178	175
76		168	165	164	166	164	161
80		155	153	152	153	152	149
84			142	141	142	141	138
88				131	132	131	128
92					123	121	119
96					114	113	110
100						105	102
104							95

3、XGC17000 LB标准工况轻型主臂作业范围图

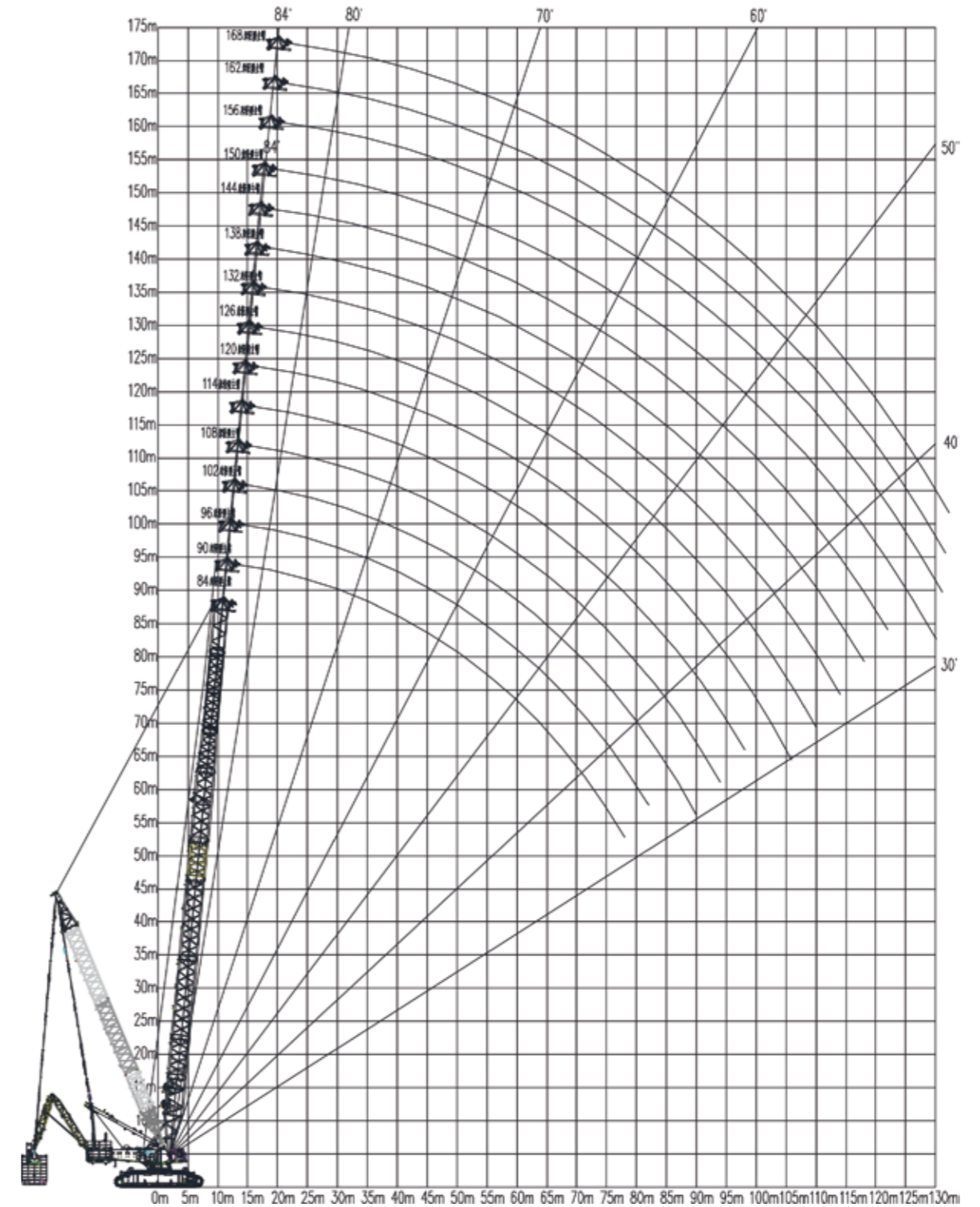


Lifting capacity tables in typical working conditions

Table 3-1 XGC17000 Lifting capacity table in standard light boom working condition (268t turntable counterweight+ 90t car-body counterweight)

Boom length(m)	48	54	60	66	72	78	84	90	96	102	108
Radius(m)											
9	650										
10	577	576									
11	518	517	514	513							
12	469	468	465	464	461						
13	428	426	424	423	419	418	415				
14	393	392	389	388	384	383	380	379			
15	363	362	359	357	354	353	350	349	348	347	
16	337	335	333	331	328	327	324	323	322	321	282
17	314	313	310	308	305	304	301	300	299	298	279
18	293	292	290	288	285	283	280	279	279	278	275
19	275	274	272	270	267	265	262	261	260	259	261
20	259	258	255	254	251	249	246	245	244	243	244
22	231	230	227	226	223	221	218	217	216	215	216
24	208	207	204	203	200	198	195	194	193	192	193
26	189	188	185	183	180	178	176	174	174	173	174
28	172	171	168	167	163	162	159	158	157	156	157
30	158	157	154	152	149	147	145	143	143	141	143
32	145	144	141	140	137	135	132	131	130	129	130
34	134	133	130	129	126	124	121	120	119	118	119
36	124	123	121	119	116	114	111	110	109	108	109
38	115	114	112	110	107	105	102	101	100	99	101
40	107	106	104	102	99	97	95	93	93	91	93
42	100	99	97	95	92	90	87	86	85	84	86
44	93	93	90	89	86	84	81	80	79	78	79
46		87	84	83	80	78	75	74	73	72	73
48		81	79	77	74	73	70	68	68	67	68
50			74	72	69	68	65	63	63	62	63
54			65	63	60	59	56	55	54	53	54
58				56	53	51	48	47	46	45	46
62				46	44	42	40	40	40	39	40
66					38	36	34	34	34	33	34
70					33	30	29	29	29	28	29
74						26	25	24	24	23	24
78							20	20			20

4. XGC17000 Working range in superlift light boom working condition



Lifting capacity tables in typical working conditions

Table 4-1 XGC17000 Lifting capacity table in superlift light boom working condition (268t turntable counterweight+ 90t car-body counterweight+ 480t superlift counterweight, superlift counterweight radius 30m)

Boom length(m)	84	90	96	102	108	114	120
Radius(m)							
12	650						
13	650	619					
14	650	619	582	545			
15	650	619	582	545	507	436	
16	650	619	582	545	507	436	396
17	650	619	582	545	507	436	396
18	650	619	582	545	507	436	396
19	650	619	582	545	507	436	396
20	650	619	582	545	507	436	396
22	650	619	582	545	507	436	396
24	650	619	582	545	507	436	396
26	650	619	582	545	507	436	396
28	596	589	582	545	507	436	396
30	554	547	543	522	501	436	396
32	517	510	507	494	474	436	396
34	484	477	474	469	450	433	395
36	460	448	445	444	428	412	389
38	431	425	423	422	408	393	377
40	406	399	397	396	389	375	360
42	383	376	374	373	370	359	345
44	362	356	353	352	349	344	330
46	343	337	334	333	330	329	317
48	326	319	317	316	313	312	305
50	310	303	301	300	297	296	293
54	282	275	273	272	269	268	265
58	258	251	249	248	245	243	241
62	237	230	228	227	224	222	220
66	219	212	209	208	205	204	201
70	202	196	193	192	189	188	185
74	188	181	179	178	175	173	171
78		168	166	165	162	161	158
82			154	153	150	149	146
86				142	140	138	135
90				133	130	129	126
94					121	120	117
98						112	109
102							101
106							94

Table 4-1 XGC17000 Lifting capacity table in superlift light boom working condition (268t turntable counterweight+ 90t car-body counterweight+ 480t superlift counterweight, superlift counterweight radius 30m)

Boom length(m)	126	132	138	144	150	156	162	168
Radius(m)								
17	343	314						
18	343	314	273	252				
19	343	314	273	252	225			
20	343	314	273	252	225	203	183	
22	343	314	273	252	225	203	183	164
24	343	314	273	252	225	203	183	164
26	343	314	273	252	225	202	182	164
28	343	314	273	251	225	202	182	164
30	343	314	273	251	225	202	182	164
32	343	313	273	251	225	202	182	163
34	337	308	273	251	224	201	182	163
36	332	302	273	251	224	201	182	163
38	325	297	273	250	224	201	181	163
40	319	291	273	250	224	201	181	163
42	313	285	272	250	223	200	181	162
44	307	279	272	250	223	200	181	162
46	302	273	272	249	223	200	180	162
48	294	268	271	249	222	199	180	162
50	283	262	262	249	222	199	180	161
54	263	251	243	233	221	198	179	161
58	239	236	226	217	209	196	179	160
62	218	215	211	202	195	189	177	158
66	200	197	195	189	183	177	171	157
70	184	181	179	176	171	166	160	155
74	169	166	164	162	160	155	150	145
78	156	153	152	149	147	147	141	136
82	144	142	140	137	136	135	132	128
86	134	131	129	126	125	125	123	120
90	124	121	120	117	116	115	114	113
94	116	113	111	108	107	106	105	104
98	107	105	103	100	99	98	97	96
102	100	97	95	93	91	91	90	89
106	93	90	89	86	84	84	83	82
110	87	84	82	79	78	78	76	76
114		78	76	73	72	72	70	70
118			71	68	67	66	65	64
122			65	63	61	61	60	59
126				58	57	56	55	54
130					52	51	50	50
134						47	46	45
138							42	41

Lifting capacity tables in typical working conditions

5. XGC17000 Standard tower jib working condition

5.1 XGC17000 Working range in standard tower jib working condition (boom angle 85°)

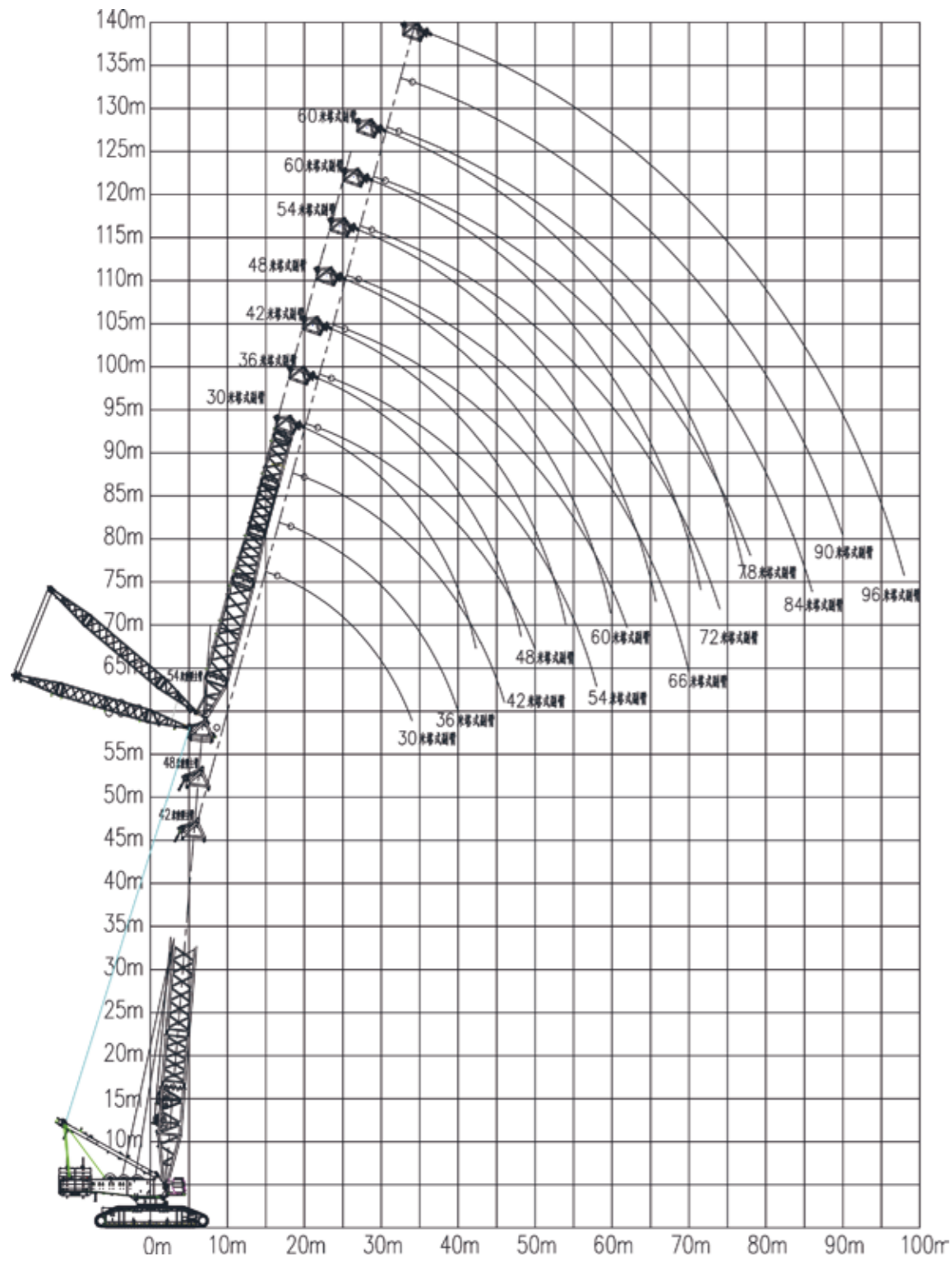


Table 5-1 XGC17000 Lifting capacity table in standard tower jib working condition

Boom length 42m, boom angle 85° , 268t turntable counterweight + 90t car-body counterweight

Radius(m)	42m boom					
	30 m Tower jib	36 m Tower jib	42 m Tower jib	48m Tower jib	54m Tower jib	60m Tower jib
17	329					
18	309	307				
19	291	289				
20	274	273	271			
22	246	245	244	241		
24	223	222	220	218	217	
26	203	202	201	199	197	195
28	187	185	184	182	181	179
30	172	171	170	168	166	164
32	159	158	157	155	154	152
34	147	147	146	144	143	141
36		137	136	134	133	131
38		128	127	125	124	122
40		119	119	118	116	114
42			112	110	109	107
44			105	104	103	101
46				98	97	95
48				92	91	90
50				87	86	85
54					77	76
58						68
62						61

Lifting capacity tables in typical working conditions

Table 5-1 XGC17000 Lifting capacity table in standard tower jib working condition

Boom length 42m, boom angle 85° , 268t turntable counterweight+ 90t car-body counterweight						
Radius(m)	42m boom					
	66 m Tower jib	72 m Tower jib	78 m Tower jib	84m Tower jib	90m Tower jib	96m Tower jib
28	177					
30	163	160				
32	150	148	146	144		
34	139	137	135	133	131	
36	129	127	126	123	122	120
38	121	119	117	115	113	111
40	113	111	109	107	105	103
42	106	104	102	100	98	96
44	99	97	95	93	92	90
46	93	91	90	88	86	84
48	88	86	84	82	80	78
50	83	81	79	77	76	73
54	74	72	70	68	67	65
58	66	64	63	61	59	57
62	59	58	56	54	53	51
66	53	52	50	48	47	45
70		46	45	43	42	40
74		42	40	39	37	35
78			36	34	33	31
82				30	29	27
86					25	24
90					22	

Table 5-1 XGC17000 Lifting capacity table in standard tower jib working condition

Boom length 48m, boom angle 85° , 268t turntable counterweight+ 90t car-body counterweight						
Radius(m)	48m boom					
	30 m Tower jib	36 m Tower jib	42 m Tower jib	48m Tower jib	54m Tower jib	60m Tower jib
17	327					
18	306					
19	288	287				
20	272	271				
22	244	243	242	239		
24	221	220	219	216	215	
26	202	200	199	197	196	193
28	185	184	183	181	179	177
30	171	169	168	166	165	163
32	158	157	156	154	152	150
34	146	146	145	143	141	139
36		136	135	133	132	130
38		127	126	124	123	121
40		118	118	116	115	113
42			111	109	108	106
44			104	103	102	100
46			98	97	96	94
48				91	90	89
50				86	85	84
54					76	75
58						67
62						60

Lifting capacity tables in typical working conditions

Table 5-1 XGC17000 Lifting capacity table in standard tower jib working condition

Boom length 48m, boom angle 85° , 268t turntable counterweight+ 90t car-body counterweight						
Radius(m)	48m boom					
	66 m Tower jib	72 m Tower jib	78 m Tower jib	84m Tower jib	90m Tower jib	96m Tower jib
28	175					
30	161	159				
32	148	146	145			
34	138	136	134	132		
36	128	126	124	122	120	118
38	119	117	115	113	112	109
40	111	109	108	106	104	102
42	104	102	101	99	97	95
44	98	96	94	92	90	88
46	92	90	88	86	85	83
48	87	85	83	81	79	77
50	82	80	78	76	74	72
54	73	71	69	67	66	64
58	65	64	62	60	58	56
62	59	57	55	53	52	50
66	53	51	50	48	46	44
70		46	44	42	41	39
74		41	40	38	36	34
78			35	34	32	30
82				30	28	26
86					25	23
90					22	

Table 5-1 XGC17000 Lifting capacity table in standard tower jib working condition

Boom length 54m, boom angle 85° , 268t turntable counterweight+ 90t car-body counterweight							
Radius(m)	54m boom						
	30 m Tower jib	36 m Tower jib	42 m Tower jib	48m Tower jib	54m Tower jib	60m Tower jib	66m Tower jib
18	304						
19	286	284					
20	270	268					
22	243	241	239				
24	220	218	217	214			
26	200	199	197	195	194	192	
28	184	182	181	179	177	175	173
30	169	168	167	165	163	161	159
32	156	156	154	152	151	149	147
34	145	144	144	141	140	138	136
36		135	134	132	130	128	126
38		126	125	123	122	120	118
40		118	117	115	114	112	110
42			110	108	107	105	103
44			103	102	101	99	97
46			97	96	95	93	91
48				90	89	88	86
50				85	84	83	81
54					75	74	72
58					67	66	65
62						59	58
66							52

Lifting capacity tables in typical working conditions

6. XGC17000 Superlift tower jib working condition

6.1 XGC17000 Working range in superlift tower jib working condition

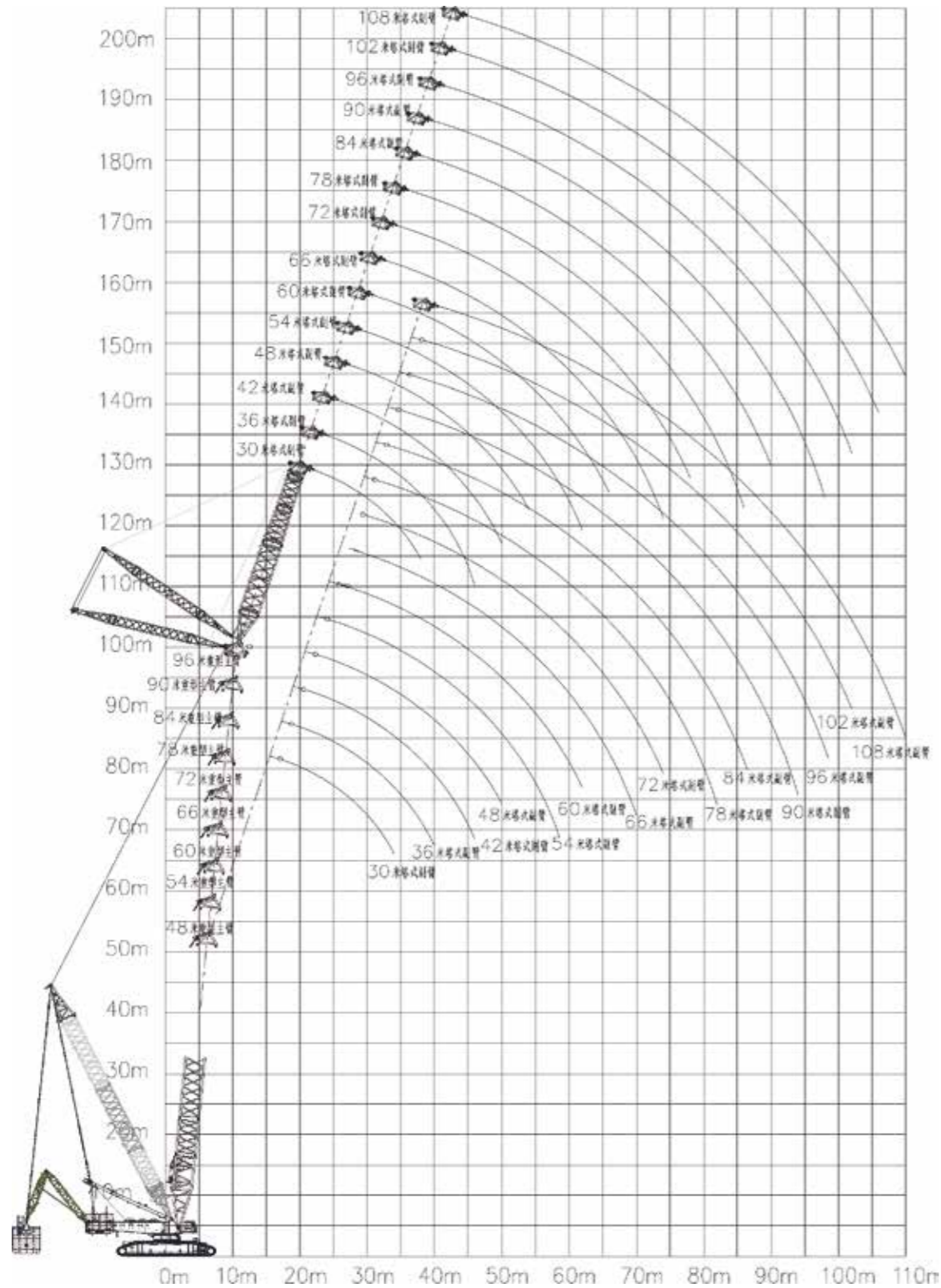


Table 6-1 XGC17000 Lifting capacity table in superlift tower jib working condition

Tower jib length 30m, boom angle 85° , superlift counterweight radius 30m, superlift counterweight 480t

Radius(m)	Boom length(m)								
	48 m	54 m	60 m	66 m	72 m	78 m	84 m	90 m	96 m
17	650								
18	650	650	619						
19	650	650	619	557	507				
20	650	650	604	543	495	445	411		
22	590	611	568	513	470	424	393	353	328
24	523	539	531	482	442	400	373	337	314
26	469	482	496	451	414	377	351	319	298
28	424	435	447	420	367	335	313	282	264
30	388	397	406	390	342	313	293	256	241
32	356	364	372	362	311	285	269	241	228
34	306	325	343	336	288	267	251	227	214
36			290	294	268	247	234	213	202
38							220	201	190

Table 6-1 XGC17000 Lifting capacity table in superlift tower jib working condition

Tower jib length 36m, boom angle 85° , superlift counterweight radius 30 m, superlift counterweight 480t

Radius(m)	Boom length(m)								
	48 m	54 m	60 m	66 m	72 m	78 m	84 m	90 m	96 m
19	615	583							
20	614	582	538						
22	600	555	513	465	426	386	358		
24	532	525	486	442	405	368	342	309	288
26	477	490	458	418	385	349	326	295	276
28	432	443	430	393	343	313	292	262	246
30	394	403	402	369	323	295	277	241	226
32	362	370	375	345	296	272	255	228	214
34	335	342	349	322	277	255	239	214	203
36	311	317	323	301	257	238	224	202	190
38	290	295	301	281	241	223	209	190	181
40	272	276	281	262	225	209	196	180	171
42				245	209	195	185	167	158
44							174	158	150

Lifting capacity tables in typical working conditions

Table 6-1 XGC17000 Lifting capacity table in superlift tower jib working condition

Tower jib length 42m, boom angle 85° , superlift counterweight radius 30 m, superlift counterweight 480t

Radius(m)	Boom length(m)								
	48 m	54 m	60 m	66 m	72 m	78 m	84 m	90 m	96 m
22	525	494	459	417					
24	508	473	441	401	370	335	313	282	
26	480	451	420	383	353	321	300	272	255
28	435	428	399	365	319	290	272	244	228
30	397	405	377	345	303	277	259	225	211
32	365	373	355	326	279	257	240	214	201
34	338	344	334	307	264	242	228	203	190
36	314	320	313	289	247	228	213	192	182
38	293	298	294	271	232	214	201	182	172
40	274	278	275	254	218	201	189	172	163
42	257	261	257	239	204	189	179	160	152
44	243	246	241	224	190	178	169	152	143
46	229	232	226	210	180	168	158	142	135
48				197	167	156	147	133	127
50								126	121

Table 6-1 XGC17000 Lifting capacity table in superlift tower jib working condition

Tower jib length 48m, boom angle 85° , superlift counterweight radius 30m, superlift counterweight 480t

Radius(m)	Boom length(m)								
	48 m	54 m	60 m	66 m	72 m	78 m	84 m	90 m	96 m
22	454								
24	449	421	394	360					
26	433	406	380	347	321	294	275	249	
28	416	389	364	334	292	267	250	224	209
30	398	372	348	319	281	257	240	209	195
32	378	354	331	304	262	239	225	199	187
34	349	336	314	289	248	228	214	190	180
36	325	318	297	274	234	215	202	182	171
38	303	301	281	259	222	204	191	173	163
40	284	284	265	245	209	192	183	164	154
42	266	268	250	231	197	183	172	153	145
44	251	252	235	218	186	172	163	145	136
46	237	237	221	205	176	163	153	136	131
48	225	223	208	193	163	152	142	129	123
50	211	210	196	182	154	142	136	122	116
54					135	125	120	109	104

Table 6-1 XGC17000 Lifting capacity table in superlift tower jib working condition

Tower jib length 54m, boom angle 85° , superlift counterweight radius 30 m, superlift counterweight 480t

Radius(m)	Boom length(m)								
	48 m	54 m	60 m	66 m	72 m	78 m	84 m	90 m	96 m
24	392								
26	384	362	340	313	291				
28	372	350	329	303	281	258	242	216	203
30	359	338	317	292	271	249	233	202	191
32	345	325	305	281	255	234	220	194	184
34	331	311	292	269	244	224	210	189	177
36	317	297	278	257	232	213	200	180	170
38	302	283	265	245	221	203	192	172	162
40	283	270	252	233	210	194	183	164	156
42	266	256	239	221	199	185	174	154	145
44	250	243	227	210	190	175	165	146	140
46	236	230	215	199	180	166	156	141	133
48	224	218	203	188	170	157	148	133	126
50	212	206	192	178	160	148	141	126	120
54	192	184	172	160	142	131	126	114	108
58		165	154	143	127	119	112	102	97

Table 6-1 XGC17000 Lifting capacity table in superlift tower jib working condition

Tower jib length 60m, boom angle 85° , superlift counterweight radius 30 m, superlift counterweight 480t

Radius(m)	Boom length(m)								
	48 m	54 m	60 m	66 m	72 m	78 m	84 m	90 m	96 m
26	337	319							
28	329	311	294	272	253				
30	320	303	286	264	246	226	213	192	181
32	310	293	277	256	238	219	206	186	175
34	300	284	267	247	230	211	199	180	169
36	290	273	257	238	220	202	192	173	163
38	279	263	247	228	211	195	184	167	157
40	268	252	237	219	202	187	176	160	151
42	257	241	226	209	194	179	168	152	145
44	246	230	216	200	185	171	161	146	138
46	234	220	206	190	176	163	153	140	132
48	222	210	196	181	167	155	146	133	126
50	210	200	186	173	154	142	134	127	120
54	190	180	168	156	138	129	122	109	103
58	173	163	152	141	126	117	110	98	94
62	155	147	137	127	113	105	99	90	85
66							95	90	81
								81	77

Lifting capacity tables in typical working conditions

Table 6-1 XGC17000 Lifting capacity table in superlift tower jib working condition

Tower jib length 66m, boom angle 85° , superlift counterweight radius 30m, superlift counterweight 480t

Radius(m)	Boom length(m)								
	48 m	54 m	60 m	66 m	72 m	78 m	84 m	90 m	96 m
28	290	276							
30	284	270	257	238	225	208			
32	278	264	250	232	219	203	191	169	160
34	270	257	243	225	213	197	186	164	155
36	263	249	236	218	206	191	180	159	150
38	255	241	228	211	199	184	174	154	146
40	246	233	220	204	192	178	168	148	141
42	238	224	211	196	185	171	161	144	136
44	229	216	203	188	177	164	155	138	131
46	221	208	195	181	170	157	149	131	123
48	212	199	187	173	163	151	142	125	118
50	204	191	179	166	151	139	131	120	113
54	187	175	163	151	137	128	120	104	98
58	171	159	148	138	125	116	109	95	90
62	156	145	135	125	113	105	99	86	81
66	140	132	122	114	100	95	89	77	75
70			111	103	93	86	81	72	68

Table 6-1 XGC17000 Lifting capacity table in superlift tower jib working condition

Tower jib length 72m, boom angle 85° , superlift counterweight radius 30m, superlift counterweight 480t

Radius(m)	Boom length(m)								
	48 m	54 m	60 m	66 m	72 m	78 m	84 m	90 m	96 m
30	244	234							
32	241	230	219	204	194	178			
34	236	225	214	199	189	173	164	146	138
36	231	219	208	195	184	169	160	142	134
38	225	214	202	189	179	164	155	138	130
40	219	207	196	183	173	159	151	133	126
42	212	201	191	177	168	154	145	129	122
44	206	196	185	171	162	149	140	125	118
46	195	185	174	162	153	140	133	116	110
48	189	178	168	156	147	134	128	111	106
50	183	172	162	150	137	126	118	108	102
54	169	159	149	139	126	115	109	94	88
58	157	146	137	127	116	106	99	86	81
62	144	135	125	117	105	97	92	78	75
66	133	123	115	106	95	88	82	72	69
70	122	114	105	97	87	79	74	66	62
74	107	103	95	88	78	72	67	58	55
78								54	52

Table 6-1 XGC17000 Lifting capacity table in superlift tower jib working condition

Tower jib length 78m, boom angle 85° , superlift counterweight radius 30m, superlift counterweight 480t

Radius(m)	Boom length(m)								
	48 m	54 m	60 m	66 m	72 m	78 m	84 m	90 m	96 m
32	209	201	194						
34	208	200	192	179	171	157	149		
36	205	196	188	176	167	154	146	129	123
38	201	193	184	171	163	150	142	126	120
40	196	188	179	167	159	146	138	123	117
42	193	183	174	163	154	142	134	120	113
44	188	179	169	158	149	137	130	116	110
46	179	169	161	150	143	131	124	109	103
48	174	165	156	145	138	126	119	105	99
50	168	160	151	141	129	118	111	101	95
54	159	149	141	131	119	110	103	88	84
58	148	140	131	121	111	101	96	82	77
62	138	129	121	112	101	93	88	76	72
66	128	120	112	103	93	85	80	69	66
70	120	111	103	96	85	77	72	64	60
74	109	101	94	87	77	70	66	57	54
78	100	94	86	79	71	64	61	53	50
82					64	59	56	47	45

Table 6-1 XGC17000 Lifting capacity table in superlift tower jib working condition

Tower jib length 84m, boom angle 85° , superlift counterweight radius 30m, superlift counterweight 480t

Radius(m)	Boom length(m)								
	48 m	54 m	60 m	66 m	72 m	78 m	84 m	90 m	96 m
36	180	174	168						
36	179	173	167	157	150	139	132		
38	178	172	165	154	147	136	129	115	109
40	176	169	161	151	145	133	127	112	106
42	173	165	158	148	141	129	124	110	103
44	169	161	154	145	138	127	120	106	101
46	162	155	147	138	131	121	114	100	95
48	158	151	144	134	127	117	111	97	92
50	154	147	140	130	119	110	104	94	89
54	146	139	131	122	112	103	97	83	78
58	139	131	123	115	104	96	91	77	74
62	130	122	115	107	97	90	84	72	69
66	122	115	107	99	90	82	76	67	63
70	114	107	99	92	82	75	71	61	57
74	106	98	92	84	75	68	64	55	53
78	98	91	84	78	69	63	59	52	48
82	92	84	78	72	64	59	55	47	44
86		78	73	67	57	52	48	43	41
90									37

Lifting capacity tables in typical working conditions

Table 6-1 XGC17000 Lifting capacity table in superlift tower jib working condition

Tower jib length 90m, boom angle 85° , superlift counterweight radius 30m, superlift counterweight 480t

Radius(m)	Boom length(m)								
	48 m	54 m	60 m	66 m	72 m	78 m	84 m	90 m	96 m
36	155	151	147	140					
38	154	150	146	139	133	123	117	104	
40	153	149	145	137	131	121	115	102	97
42	152	148	143	134	128	118	113	100	95
44	151	146	140	131	125	116	110	98	94
46	145	140	134	125	120	111	105	92	87
48	143	137	131	122	117	108	102	90	85
50	140	134	128	120	114	105	100	87	82
54	134	127	121	114	108	99	95	82	78
58	127	121	115	107	101	94	88	77	73
62	120	115	108	100	96	87	82	73	69
66	112	105	98	93	88	80	75	68	63
70	105	98	93	86	82	75	71	62	59
74	98	92	86	79	75	69	64	57	54
78	93	86	80	74	70	63	60	51	47
82	87	80	74	68	65	59	55	46	43
86	81	74	69	63	59	55	51	42	40
90	74	70	64	58	53	47	44	39	37
94						43	41	36	35

Table 6-1 XGC17000 Lifting capacity table in superlift tower jib working condition

Tower jib length 96m, boom angle 85° , superlift counterweight radius 30m, superlift counterweight 480t

Radius(m)	Boom length(m)								
	48 m	54 m	60 m	66 m	72 m	78 m	84 m	90 m	96 m
36	130								
38	129	126	122	116					
40	128	125	121	115	109	101	96	87	
42	127	124	120	114	107	99	94	86	81
44	126	123	119	112	105	98	93	84	79
46	122	119	114	108	101	94	89	80	75
48	118	114	110	103	95	89	87	78	73
50	116	111	107	100	94	87	85	76	72
54	112	107	102	95	89	82	79	72	69
58	107	102	97	92	85	77	74	69	64
62	96	93	88	82	79	73	70	64	61
66	93	88	83	77	75	68	66	60	56
70	86	81	76	70	70	64	62	56	52
74	80	75	69	65	61	54	52	47	44
78	76	70	66	62	56	51	50	41	39
82	69	65	62	56	52	47	44	38	37
86	66	62	57	52	48	44	41	36	35
90	62	57	53	48	42	38	36	34	31
94	59	54	49	45	38	35	34	31	28
98			46	43	36	33	31	28	26

Table 6-1 XGC17000 Lifting capacity table in superlift tower jib working condition

Tower jib length 102m, boom angle 85° , superlift counterweight radius 30m, superlift counterweight 480t

Radius(m)	Boom length(m)								
	48 m	54 m	60 m	66 m	72 m	78 m	84 m	90 m	96 m
38	112								
40	111	108	105	100	96				
42	110	107	104	100	95	91	85	76	73
44	110	107	104	99	94	89	84	75	72
46	107	104	101	97	92	85	80	72	69
48	103	100	97	93	87	81	78	71	68
50	102	99	95	91	86	79	77	69	66
54	100	96	93	88	81	75	73	66	63
58	96	93	89	84	77	72	69	64	60
62	88	84	80	76	73	68	65	57	53
66	84	81	76	71	70	64	62	53	49
70	79	75	70	67	65	60	58	49	46
74	74	69	66	62	57	51	51	41	38
78	69	66	62	58	53	49	47	37	35
82	66	62	58	53	49	45	42	35	34
86	63	58	55	49	47	41	39	33	31
90	59	55	50	47	40	36	36	30	28
94	55	51	47	45	38	34	33	26	25
98	50	48	45	42	35	32	30	24	22
102	47	46	42	39	33	30	26	22	20
106							25	20	

Table 6-1 XGC17000 Lifting capacity table in superlift tower jib working condition

Tower jib length 108m, boom angle 85° , superlift counterweight radius 30m, superlift counterweight 480t

Radius(m)	Boom length(m)								
	48 m	54 m	60 m	66 m	72 m	78 m	84 m	90 m	96 m
40	98								
42	97	95	94	90	85				
44	96	95	93	89	85	79	74	67	64
46	94	92	90	87	82	76	71	65	63
48	90	89	87	83	78	72	70	64	61
50	89	88	86	82	76	71	69	63	60
54	89	87	84	79	73	68	66	61	57
58	86	84	80	76	71	65	64	57	55
62	78	76	73	69	67	62	60	52	49
66	75	73	70	65	64	58	57	48	46
70	68	68	65	61	61	56	54	46	42
74	64	64	62	57	53	49	47	38	36
78	62	62	58	53	50	46	43	35	34
82	57	57	54	49	47	42	40	34	31
86	52	53	51	47	44	40	38	31	28
90	47	47	47	45	38	35	34	28	26
94	44	44	45	42	35	33	31	25	23
98	40	40	41	40	33	31	29	23	20
102	35	36	36	37	31	29	26	20	
106	31	32	32	32	30	26	24		
110				30	28	25	23		

Lifting capacity tables in typical working conditions

7. XGC17000 Superlift heavy special jib working condition

7.1 XGC17000 Working range in superlift heavy special jib working condition

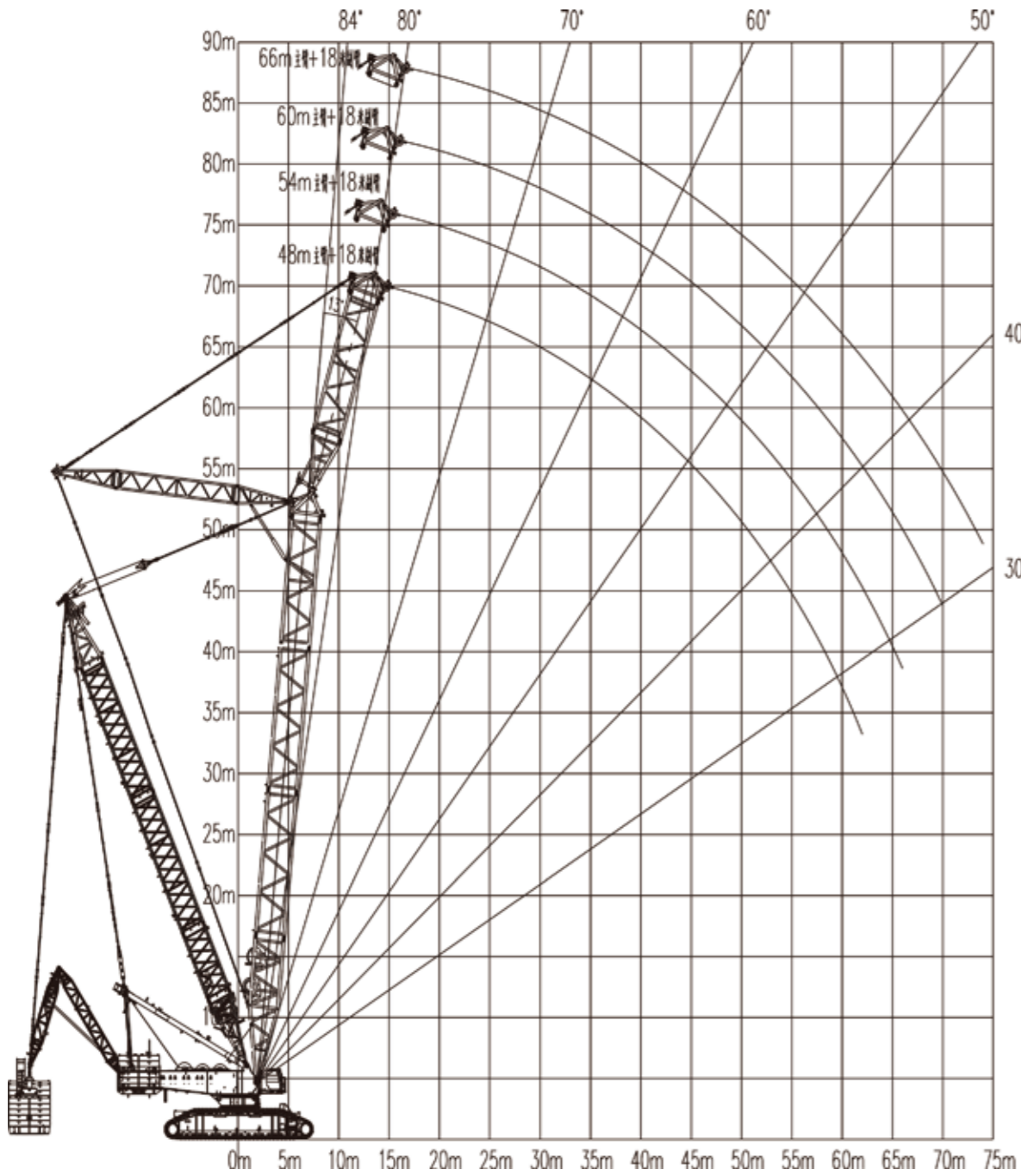


表7-1 XGC17000 SHVHJ超起工况重型专用副臂起重性能表

专用副臂长度 18 m, 安装角 13°, 超起平衡重半径 30 m, 超起配重 480t

臂长(m)	48	54	60	66
幅度(m)				
15	650			
16	650			
17	650	650	650	626
18	650	650	650	626
19	650	650	650	626
20	650	650	650	626
22	650	642	636	626
24	615	611	607	626
26	584	582	581	626
28	555	556	557	586
30	529	532	535	543
34	478	477	475	471
38	417	417	416	414
42	368	368	366	364
46	328	327	326	324
50	295	294	292	290
54	260	265	263	261
58	224	240	238	237
62	190	216	217	215
66		186	198	196
70			179	180
74				165

Lifting capacity tables in typical working conditions

8. XGC17000 Superlift light special jib working condition

8.1 XGC17000 Working range in superlift light special jib working condition

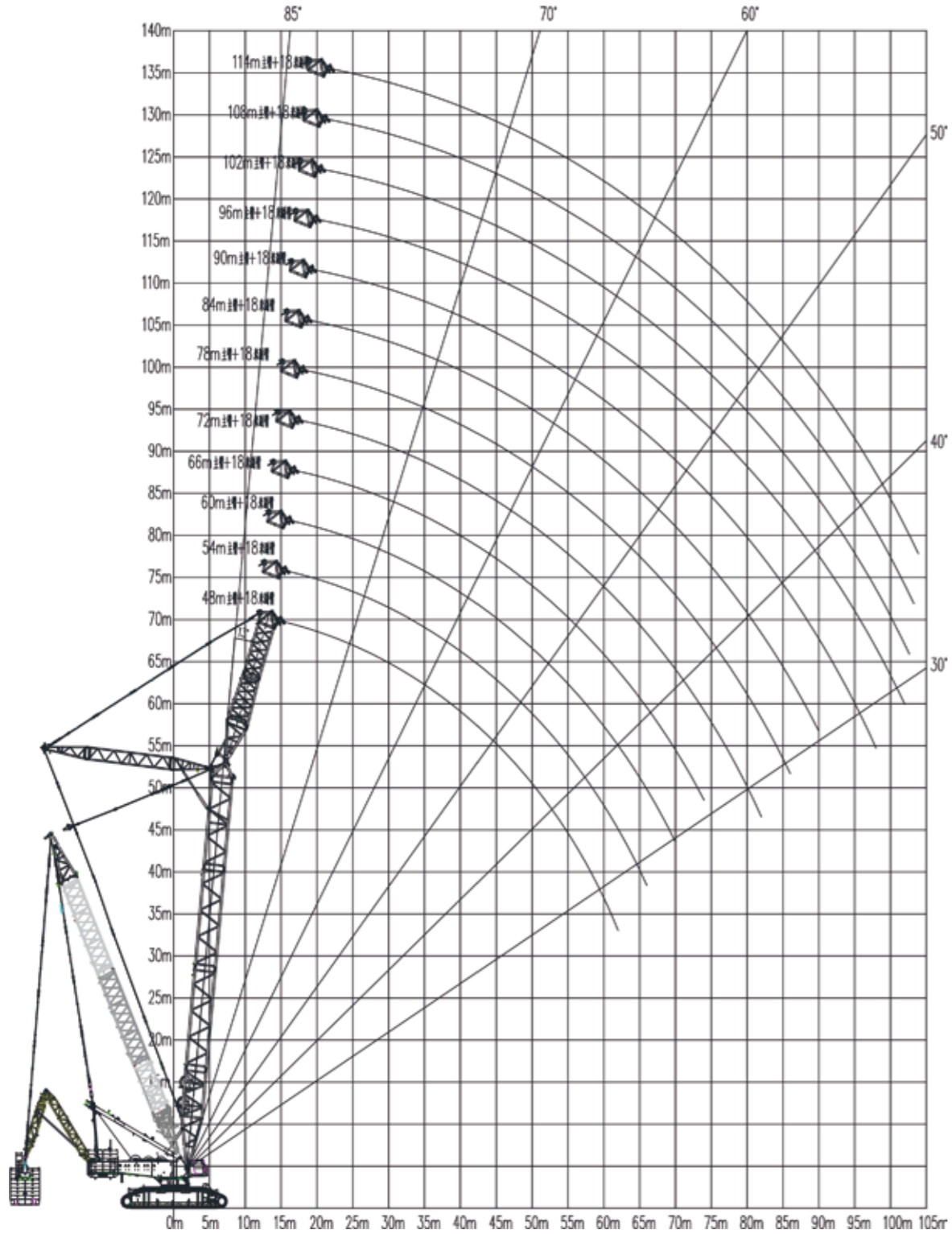


Table 8-1 XGC17000 Lifting capacity table in superlift light special jib working condition

Special jib length 18m, installation angle 13°, superlift counterweight radius 30m, superlift counterweight 480t

Boom length (m)	48	54	60	66	72
Radius (m)	48	54	60	66	72
15	650				
16	650	650			
17	650	650	650	650	
18	650	650	650	650	619
19	650	650	650	650	619
20	650	650	650	650	619
22	650	647	640	650	619
24	619	615	611	650	619
26	587	586	584	637	619
28	558	559	560	588	586
30	532	535	538	545	542
34	480	479	477	473	471
38	420	419	418	416	414
42	371	370	368	366	364
46	330	330	328	326	324
50	297	296	294	292	290
54	262	267	265	263	261
58	227	243	241	239	236
62		219	219	217	215
66		189	200	199	196
70			181	182	180
74				167	165
78					151
82					139

Lifting capacity tables in typical working conditions

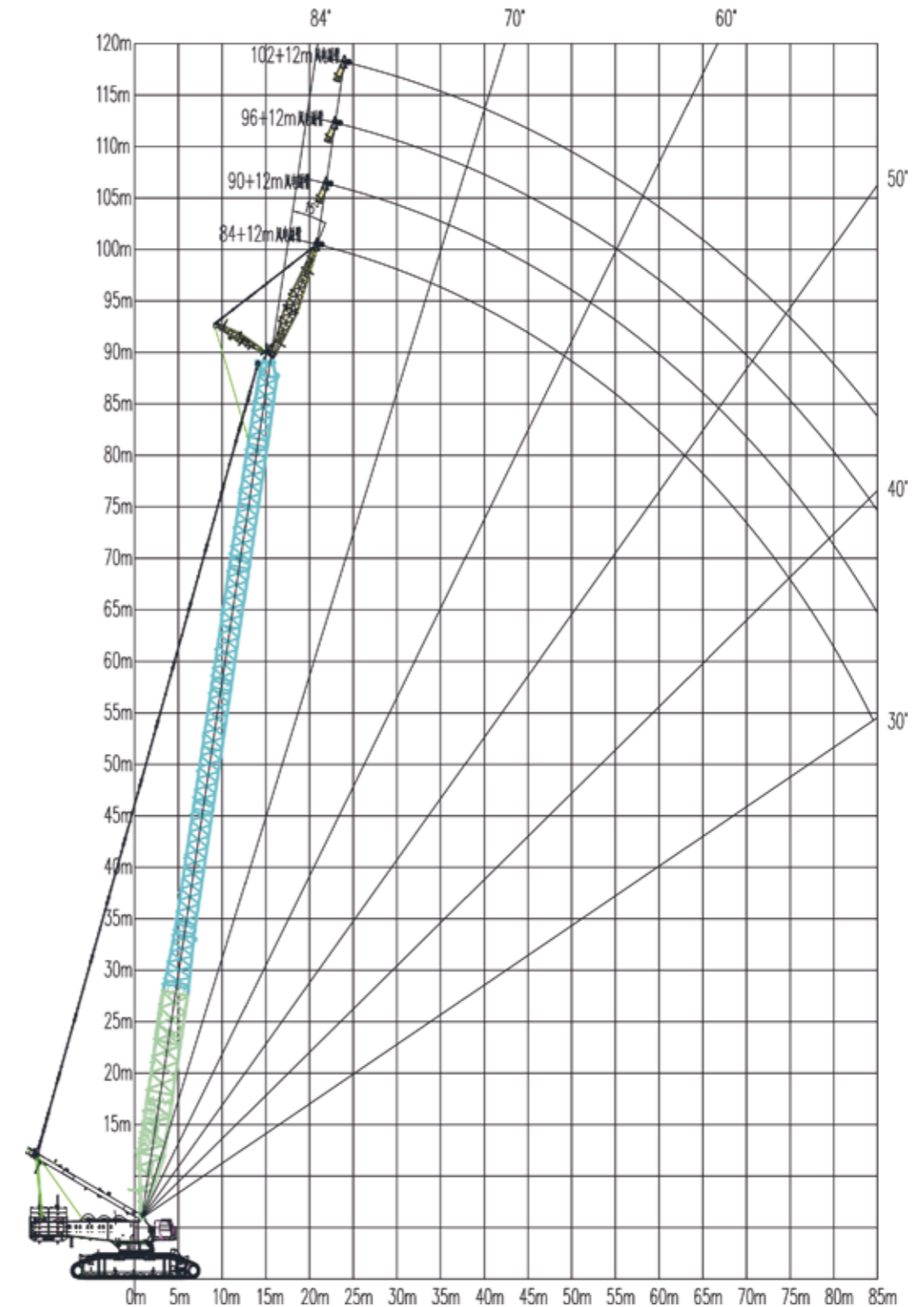
Table 8-1 XGC17000 Lifting capacity table in superlift light special jib working condition

Special jib length 18m, installation angle 13° , superlift counterweight radius 30m, superlift counterweight 480t

Boom length (m)	78	84	90	96	102	108	114
19	582						
20	582	545	498				
22	582	545	498	452	391		
24	582	545	498	452	391	358	310
26	582	545	498	452	391	358	310
28	582	545	493	452	387	357	309
30	541	537	487	448	382	353	305
34	469	467	458	438	373	344	297
38	412	410	408	394	364	334	288
42	363	361	360	357	343	325	279
46	322	320	319	317	313	300	271
50	288	286	285	283	282	275	262
54	260	257	256	254	253	250	243
58	235	233	231	229	228	225	224
62	213	211	210	207	206	203	202
66	195	192	191	188	187	184	183
70	178	175	174	172	170	167	166
74	163	160	159	157	155	152	151
78	150	147	146	143	142	139	137
82	137	135	134	131	130	127	125
86	126	124	123	120	119	116	114
90		114	113	110	109	106	104
94			103	101	100	97	95
98			95	92	91	88	87
102				84	83	80	79
106					76	73	72
110						66	65
114						60	58
118							52

9. XGC17000 Standard wind power jib working condition

9.1 XGC17000 Working range in standard wind power jib working condition



Lifting capacity tables in typical working conditions

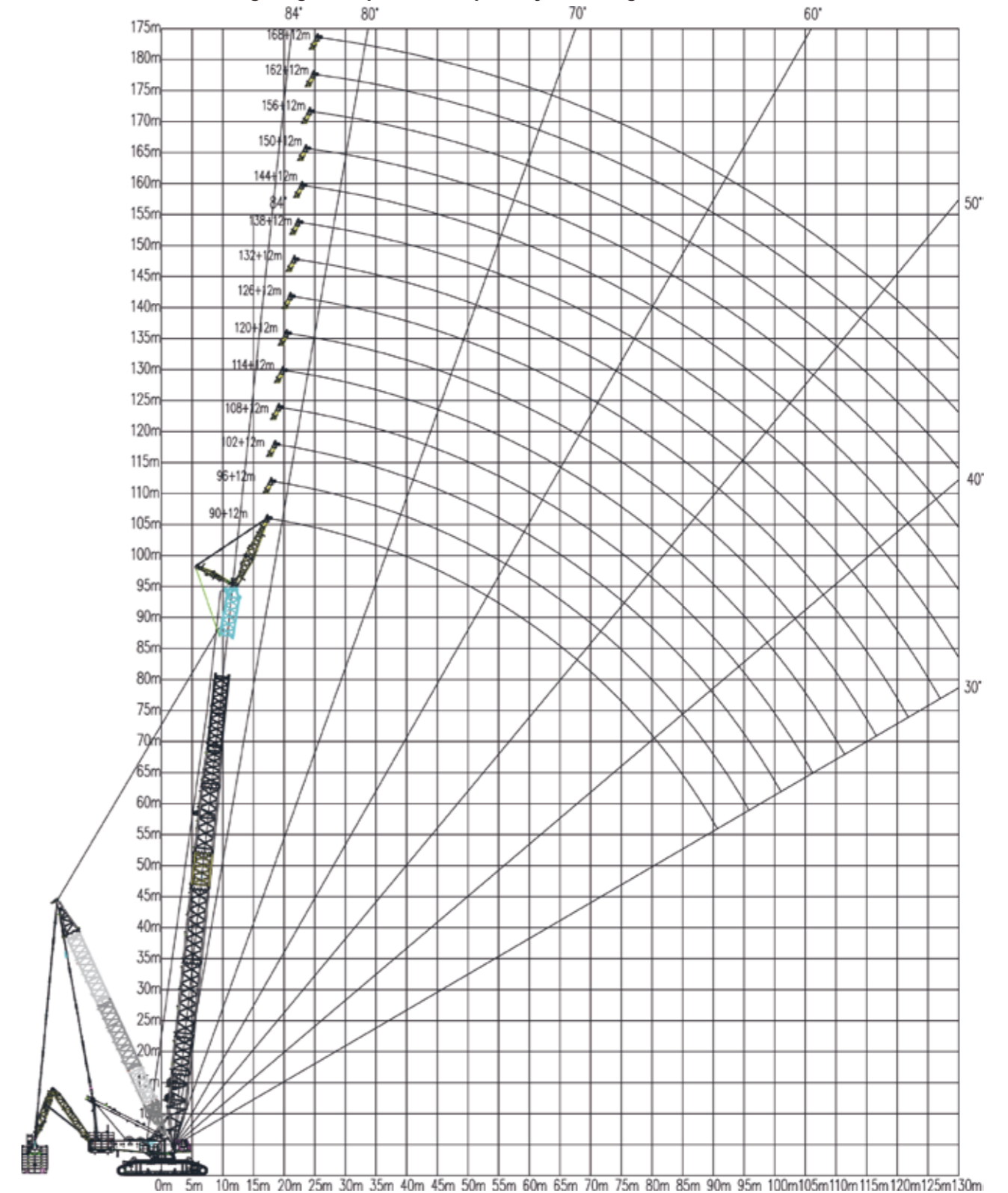
Table 9-1 XGC17000 Lifting capacity table in standard wind power jib working condition

(Jib length 12m, 268t turntable counterweight + 90t car-body counterweight, angle between boom and jib 15°)

Boom length (m)	84	90	96	102
Radius (m)				
19	320			
20	308	231	220	159
22	287	227	216	157
24	269	222	209	155
26	252	218	209	154
28	224	211	204	151
30	200	199	199	148
34	180	179	180	145
38	163	162	163	142
42	148	147	149	139
46	135	134	136	137
50	124	123	124	127
54	114	113	114	117
58	105	104	105	108
62	97	96	97	100
66	90	89	90	93
70	83	82	84	86
74	77	76	77	80
78	72	71	72	75
82	67	65	67	69
86	58	56	58	60
90	50	49	50	53
94	43	42	43	46
98	37	36	37	40
102	32	31	32	35
106	27	26	27	30
110	23	22	23	26
114				22
118				

10. XGC17000 Superlift wind power jib working condition

10.1 XGC17000 Working range in superlift wind power jib working condition



Lifting capacity tables in typical working conditions

Table 10-1 XGC17000 Lifting capacity table in superlift wind power jib working condition

(Jib length 12m, 268t turntable counterweight + 90t car-body counterweight + 480t superlift counterweight, angle between boom and jib 15° , superlift counterweight radius 30m)

Boom length (m) Radius (m)	90	96	102	108	114	120	126
16	320	320					
17	320	320	320	320			
18	320	320	320	320	320	305	
19	320	320	320	320	320	305	268
20	320	320	320	320	320	305	268
22	320	320	320	320	319	305	268
24	320	320	320	320	317	304	268
26	312	319	320	320	313	303	268
28	300	307	315	315	308	301	268
30	289	296	304	308	303	297	268
32	278	286	293	302	298	294	268
34	269	276	284	291	293	290	267
36	260	267	275	282	288	286	266
38	252	259	266	274	280	281	264
40	244	251	258	266	272	277	263
42	237	244	251	258	265	274	262
44	230	237	244	251	257	264	261
46	223	230	238	245	251	257	259
48	217	224	231	238	244	251	257
50	212	219	226	232	238	245	251
54	201	208	215	221	227	234	239
58	192	198	205	211	217	223	229
62	184	190	196	202	208	214	220
66	176	182	188	194	200	203	202
70	169	175	181	187	190	187	185
74	163	169	175	177	175	173	171
78	158	163	167	164	162	160	158
82	153	156	155	152	151	148	146
86	148	146	144	141	140	137	135
90	138	136	135	132	130	127	126
94		127	126	123	121	119	117
98			118	115	113	110	109
102			110	107	106	103	101
106				100	99	96	94
110					92	90	88
114						83	82
118						78	76
122							71

Table 10-1 XGC17000 Lifting capacity table in superlift wind power jib working condition

(Jib length 12m, 268t turntable counterweight + 90t car-body counterweight + 480t superlift counterweight, angle between boom and jib 15° , superlift counterweight radius 30m)

Boom length (m) Radius (m)	132	138	144	150	156	162	168
20	248	220					
22	248	220	204	184	166	151	
24	248	220	204	184	166	151	136
26	248	220	204	184	166	151	136
28	248	220	204	184	166	151	136
30	248	220	204	184	166	151	136
32	248	220	204	184	166	151	136
34	248	220	204	184	165	151	136
36	248	220	204	183	165	150	136
38	248	220	204	183	165	150	135
40	248	220	204	180	165	150	135
42	247	220	204	180	165	150	135
44	245	220	204	177	165	150	135
46	244	220	204	175	163	150	135
48	243	220	203	172	163	149	134
50	242	219	203	170	162	149	134
54	240	215	203	164	157	148	133
58	226	212	201	158	153	141	132
62	211	204	195	151	149	140	130
66	199	191	182	147	145	136	128
70	183	179	171	142	140	131	127
74	168	166	160	137	136	127	124
78	155	153	150	133	131	123	121
82	143	142	139	129	128	119	117
86	133	131	128	125	124	116	114
90	123	121	118	117	117	112	111
94	114	112	109	108	108	106	104
98	106	104	101	100	100	98	96
102	98	97	94	93	92	91	89
106	92	90	87	86	85	84	82
110	85	83	80	79	79	77	75
114	79	77	74	73	73	71	69
118	73	72	69	68	67	66	64
122	68	66	64	63	62	61	59
126	63	62	59	58	57	56	54
130		57	54	53	52	51	49

Lifting capacity tables in typical working conditions

11. XGC17000 Working range in superlift single/double boom working condition

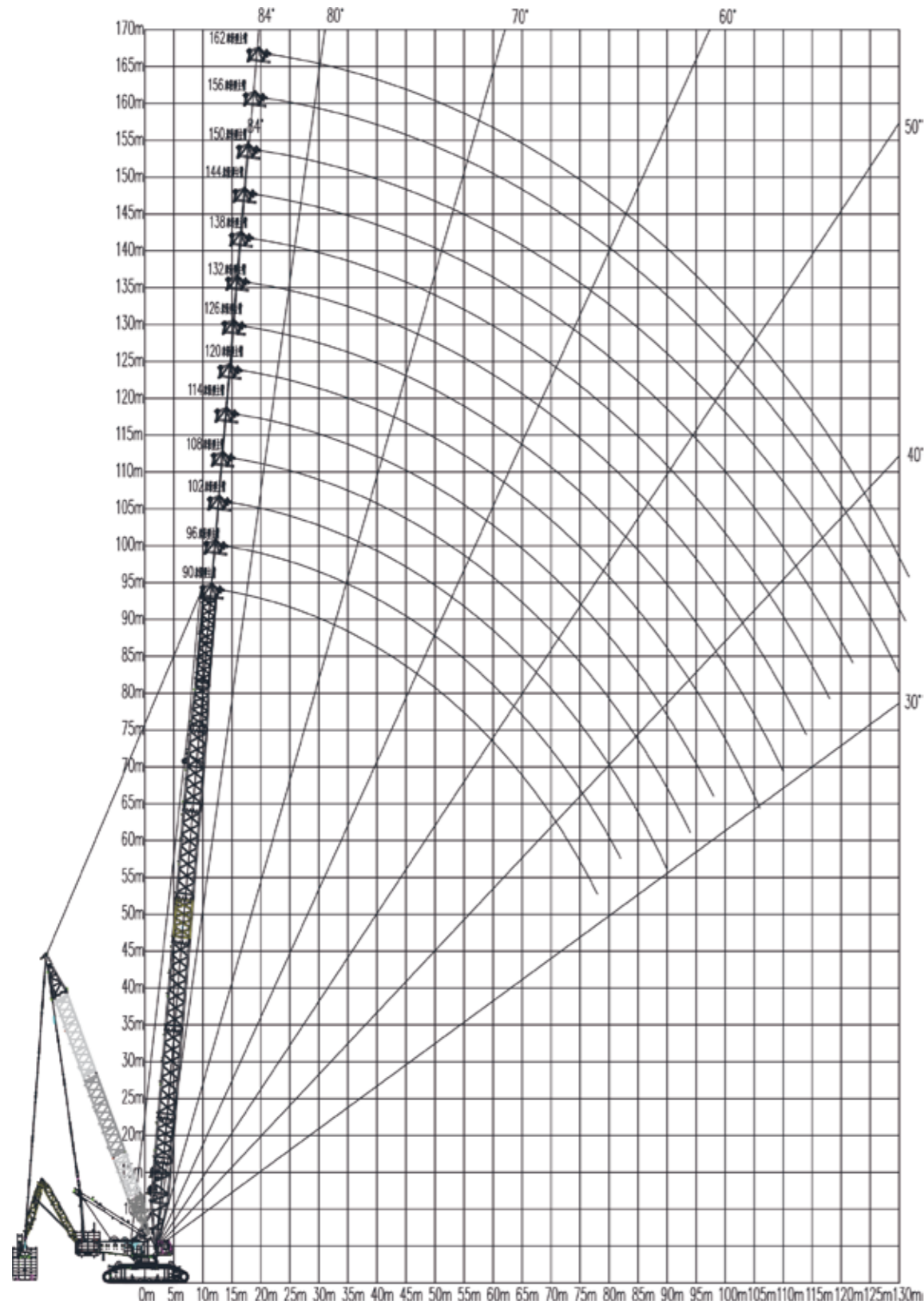


Table 11-1 XGC17000 Lifting capacity table in superlift single/double boom working condition

(268t turntable counterweight + 90t car-body counterweight + 480t superlift counterweight, superlift counterweight radius 30m)

Boom length(m)	90	96	102	108	114	120
Radius(m)						
14	626	588	550	550		
15	626	588	550	550	511	472
16	626	588	550	550	511	472
17	626	588	550	550	511	472
18	626	588	550	550	511	472
19	626	588	550	550	511	472
20	626	588	550	550	511	472
22	626	588	550	550	511	472
24	626	588	550	550	511	472
26	626	588	550	550	511	472
28	585	570	550	523	501	472
30	543	536	513	493	472	453
32	506	502	485	466	446	428
34	473	469	459	441	422	406
36	443	440	436	419	401	386
38	416	413	410	399	382	367
40	391	388	385	380	364	350
44	347	344	341	339	333	320
48	311	307	305	303	300	294
52	280	277	274	272	270	268
56	254	251	248	246	243	242
60	232	228	226	224	221	219
64	212	209	206	204	201	200
68	195	192	189	187	184	182
72	179	176	173	172	169	167
76	166	163	160	158	155	153
80	153	150	147	146	143	141
84		139	136	135	132	130
88			126	125	122	120
92				115	112	111
96				107	104	102
100					96	94
104						87

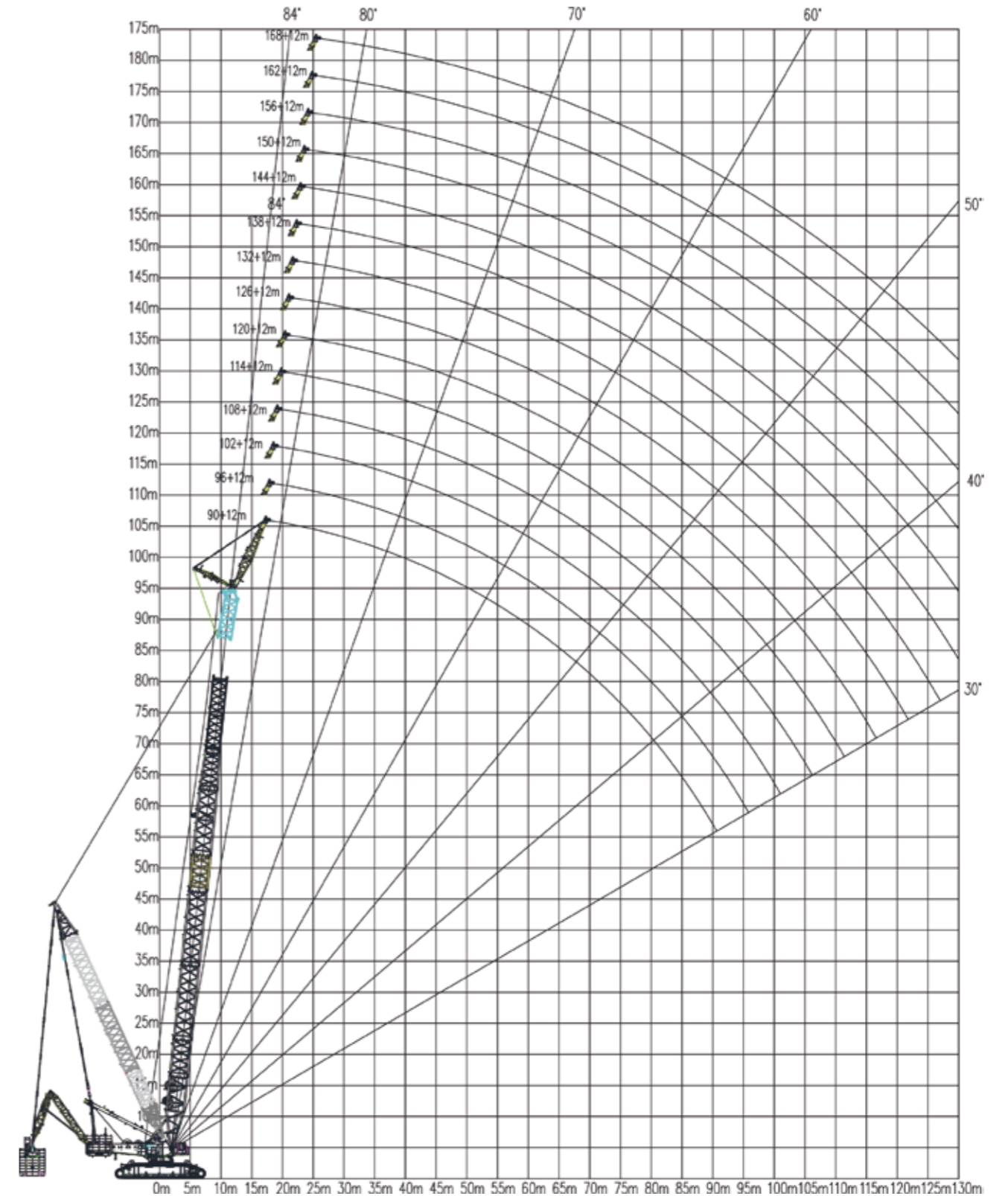
Lifting capacity tables in typical working conditions

Table 11-1 XGC17000 Lifting capacity table in superlift single/double boom working condition

(268t turntable counterweight + 90t car-body counterweight + 480t superlift counterweight, superlift counterweight radius 30m)

Boom length (m)	126	132	138	144	150	156	162
Radius (m)							
16	472	432					
17	472	432	432				
18	472	432	432	392	365		
19	472	432	432	392	365	328	248
20	472	432	432	392	365	328	248
22	472	432	432	392	365	328	248
24	472	432	432	392	365	328	247
26	472	432	432	392	365	328	247
28	461	432	432	392	365	325	247
30	435	419	403	392	365	320	247
32	411	396	380	367	353	316	246
34	389	375	360	347	334	311	246
36	370	356	342	330	317	306	246
38	352	339	325	314	301	296	245
40	336	323	310	299	287	283	243
44	307	296	283	273	261	258	240
48	282	272	260	250	239	237	234
52	260	251	240	231	220	218	216
56	239	232	222	214	204	202	200
60	216	215	206	198	189	187	185
64	196	195	192	184	175	174	172
68	179	178	175	171	163	161	160
72	164	163	159	158	152	150	149
76	150	149	146	144	141	139	139
80	138	137	133	132	128	127	129
84	127	125	122	121	117	116	117
88	117	115	112	111	107	106	107
92	107	106	103	101	98	97	98
96	99	98	94	93	90	88	90
100	91	90	87	85	82	80	82
104	84	83	80	78	75	73	75
108	77	76	73	71	68	67	68

12. XGC17000 Working range in superlift single/double wind power jib working condition



Lifting capacity tables in typical working conditions

Table 12-1 XGC17000 Lifting capacity table in superlift single/double wind power jib working condition

(Jib length 12m, 268t turntable counterweight + 90t car-body counterweight + 480t superlift counterweight, angle between boom and jib 15° , superlift counterweight radius 30m)

Boom length (m)	90	96	102	108	114	120	126
16	320	320					
17	320	320	320	320			
18	320	320	320	320	320	320	
19	320	320	320	320	320	320	320
20	320	320	320	320	320	320	320
22	320	320	320	320	320	320	320
24	320	320	320	320	320	320	320
26	316	320	320	320	320	320	320
28	303	311	318	320	320	320	320
30	292	299	307	315	319	319	319
32	282	289	297	304	311	313	313
34	272	279	287	295	301	308	308
36	263	270	278	285	292	299	303
38	255	262	269	277	283	290	296
40	247	254	261	269	275	282	288
42	239	246	254	261	267	274	280
44	232	239	247	254	260	267	273
46	226	233	240	247	253	260	266
48	220	227	234	241	247	254	259
50	214	221	228	235	241	248	253
54	204	210	217	224	230	236	242
58	194	201	207	214	219	226	225
62	186	192	198	204	210	212	209
66	178	184	190	196	196	194	191
70	171	177	183	182	179	177	174
74	165	170	170	168	165	163	160
78	159	160	157	155	152	150	147
82	151	148	145	143	140	138	135
86	141	137	134	133	130	128	124
90	131	128	125	123	120	118	115
94		119	116	114	111	109	106
98			108	106	103	101	98
102			100	98	95	94	90
106				91	88	87	83
110					82	80	77
114						74	71
118						68	65
122							60

Table 12-1 XGC17000 Lifting capacity table in superlift single/double wind power jib working condition

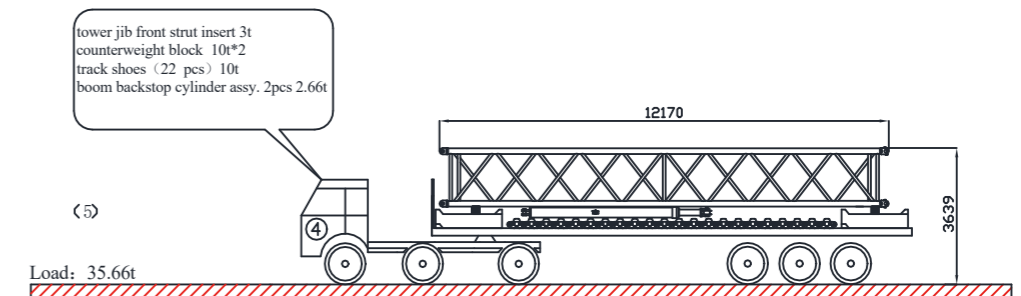
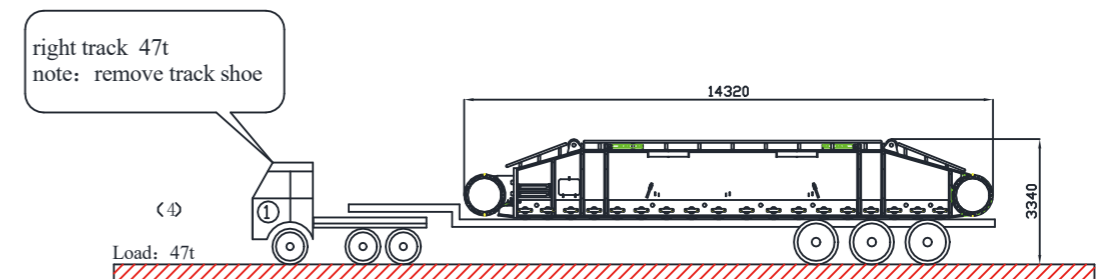
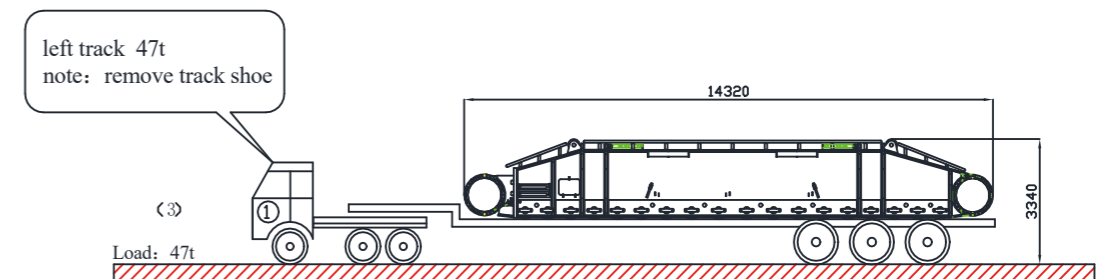
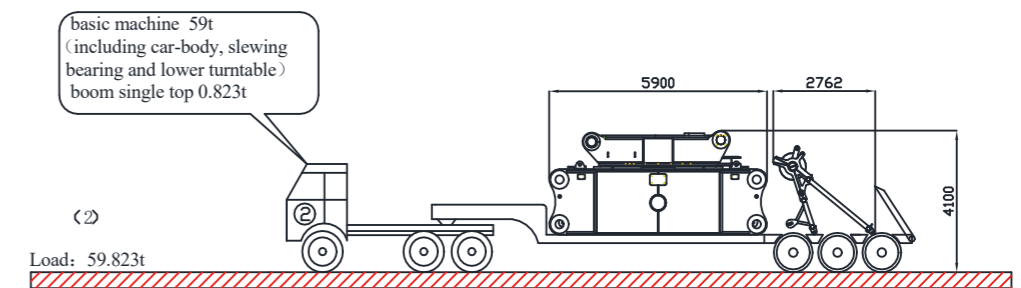
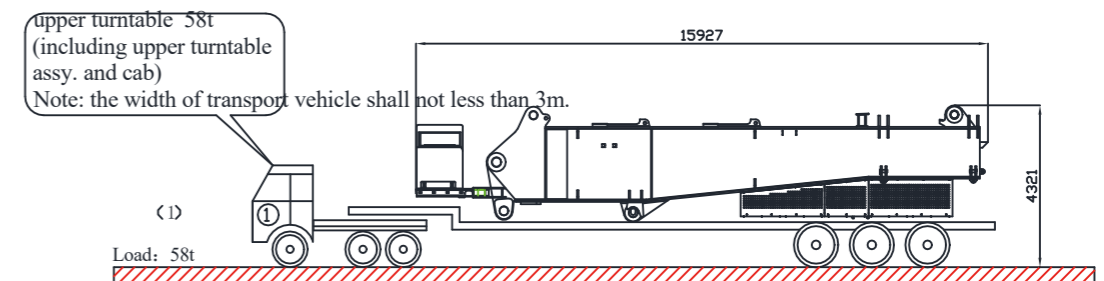
(Jib length 12m, 268t turntable counterweight + 90t car-body counterweight + 480t superlift counterweight, angle between boom and jib 15° , superlift counterweight radius 30m)

Boom length (m)	132	138	144	150	156	162
20	320	320				
22	320	320	310	288	213	182
24	320	320	309	288	213	182
26	320	320	308	288	212	182
28	318	319	306	288	212	181
30	314	315	304	288	212	179
32	309	310	301	287	212	177
34	304	305	298	285	212	175
36	300	300	294	283	210	173
38	296	295	290	281	209	168
40	291	290	286	277	208	167
42	287	285	275	264	207	165
44	280	273	263	252	206	163
46	273	261	252	241	205	161
48	262	251	241	231	203	155
50	251	241	232	222	201	155
54	233	223	214	205	198	152
58	216	207	199	190	193	147
62	201	192	185	176	180	141
66	188	179	172	164	168	136
70	173	167	160	153	157	132
74	158	155	150	142	147	127
78	145	142	141	133	137	123
82	134	131	129	124	129	120
86	123	120	118	115	118	116
90	113	110	109	106	109	112
94	105	101	100	97	100	103
98	96	93	92	89	92	95
102	89	86	84	81	84	87
106	82	79	77	74	77	81
110	76	72	71	68	71	74
114	70	66	65	62	65	68
118	64	61	59	56	60	63
122	59	56	54	51	54	58
126	54	51	49	46	49	53
130		46	45	42	45	48

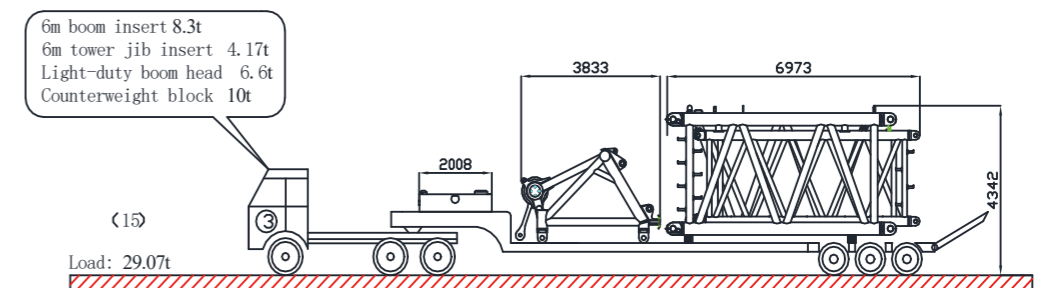
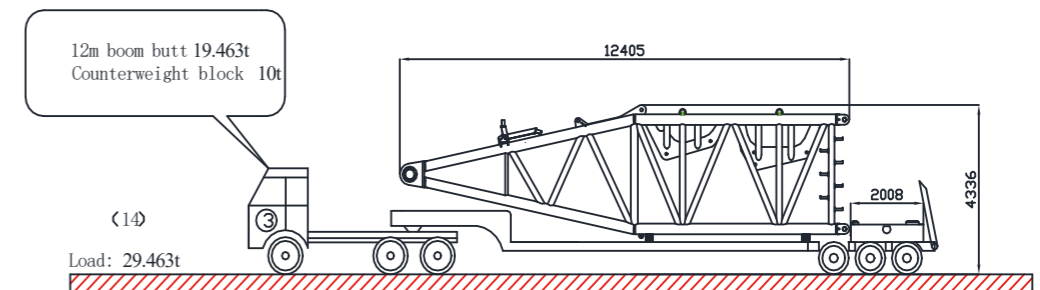
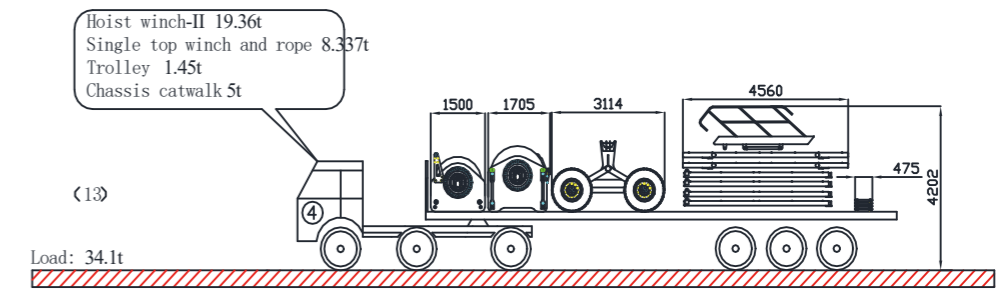
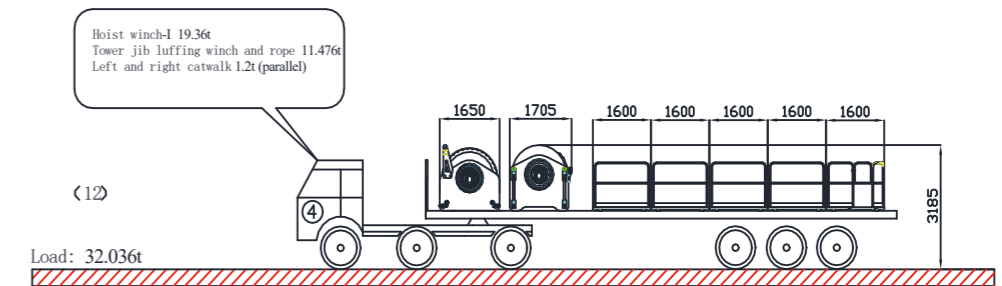
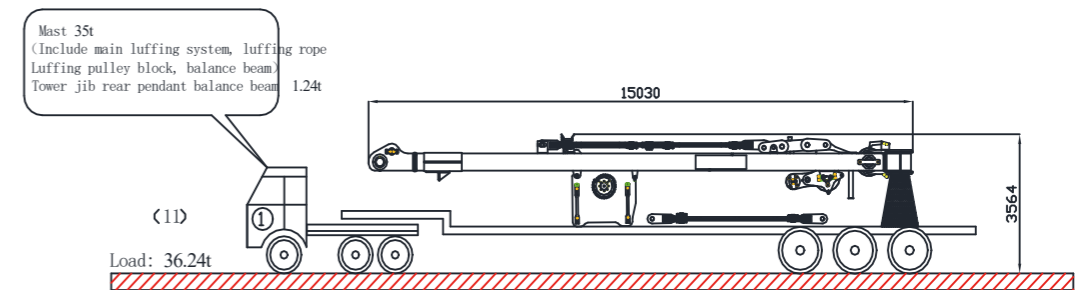
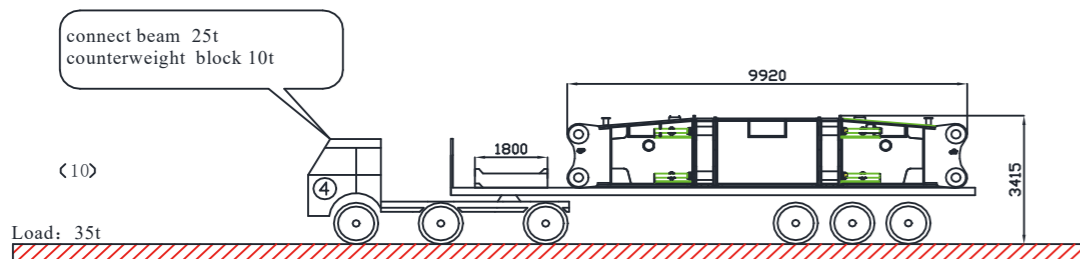
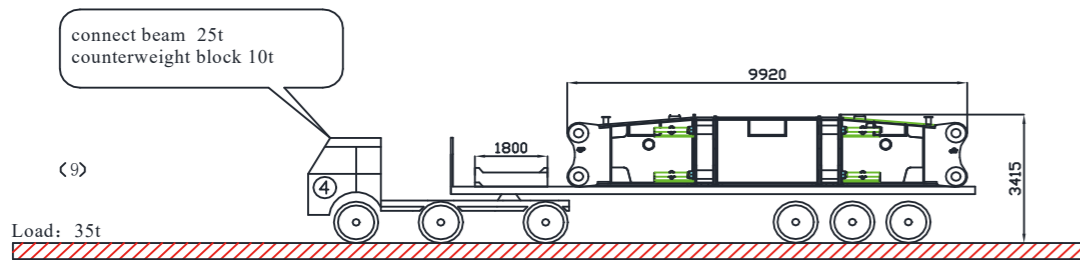
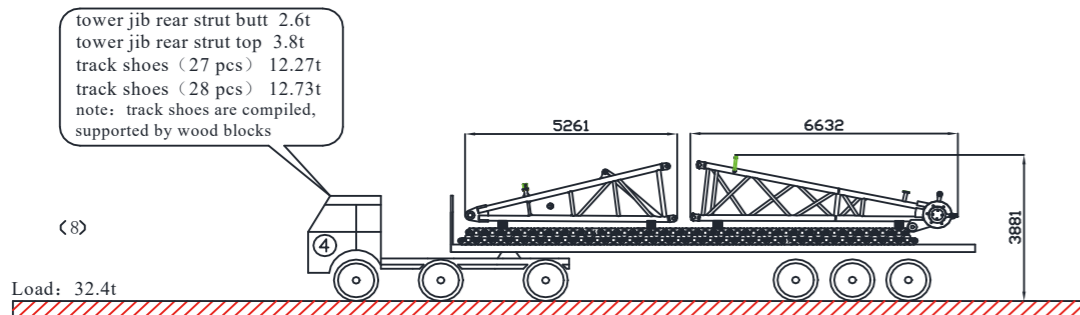
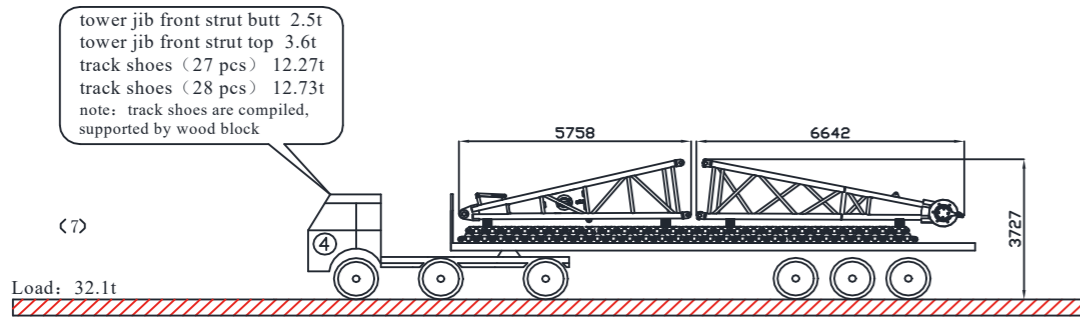
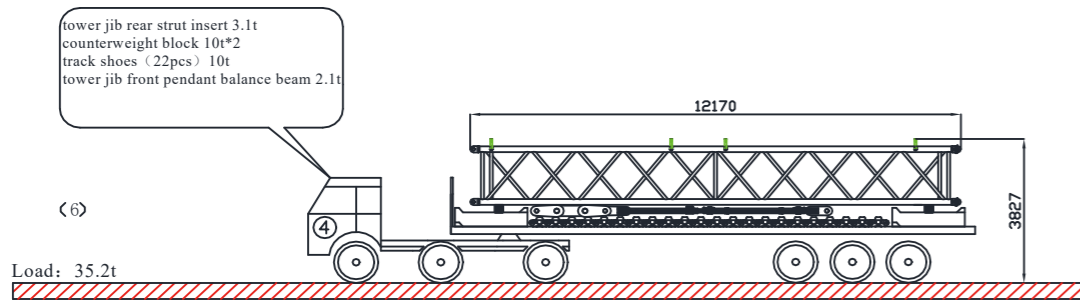
53

XGC17000 CRAWLER CRANE

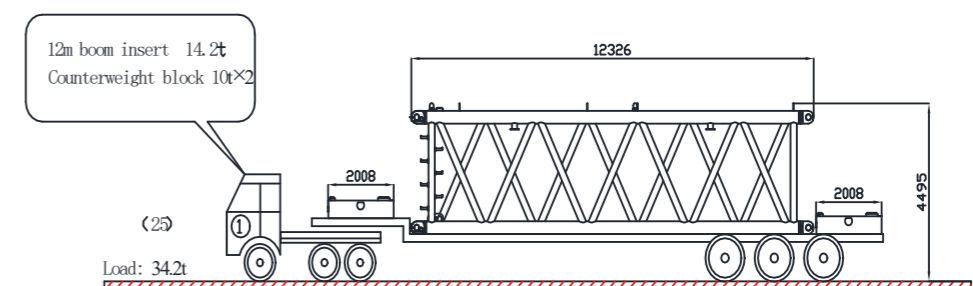
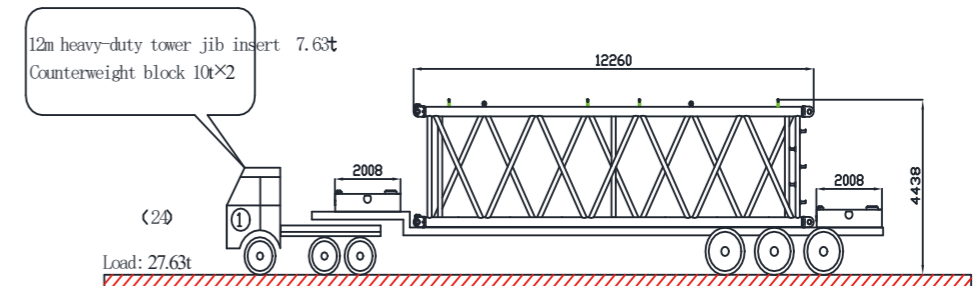
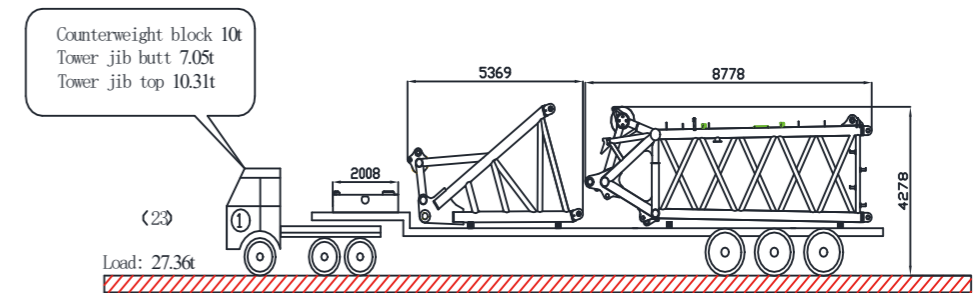
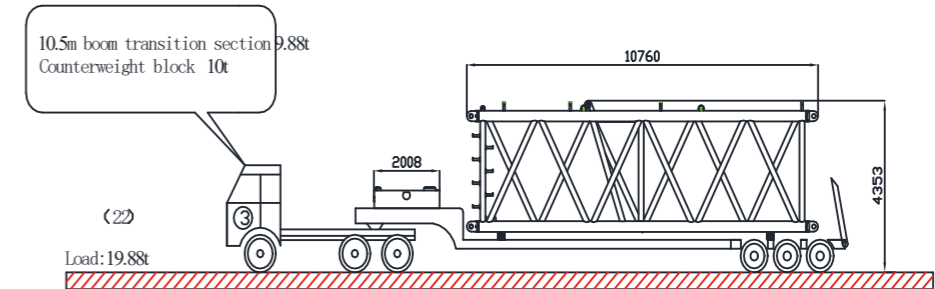
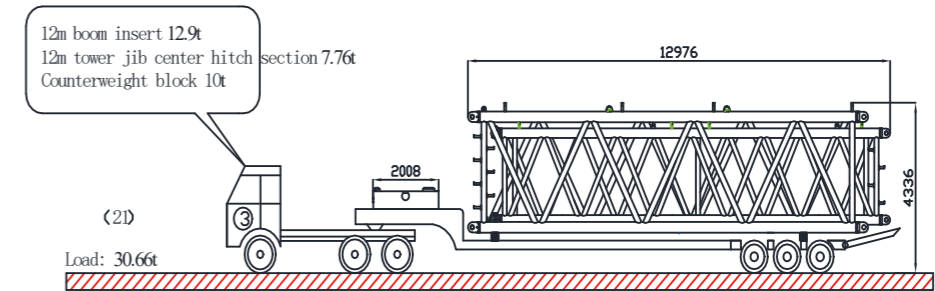
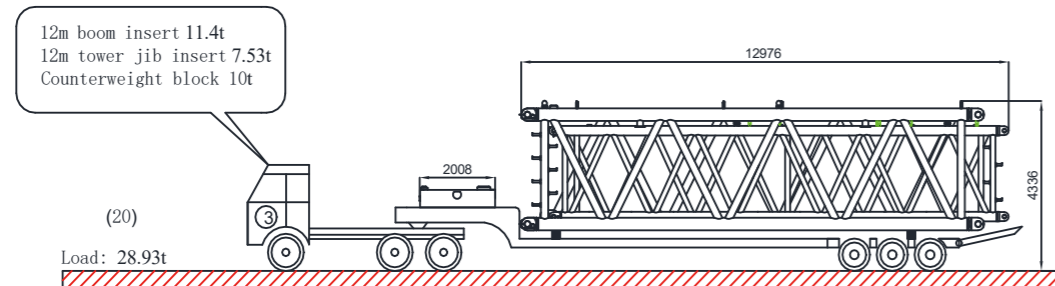
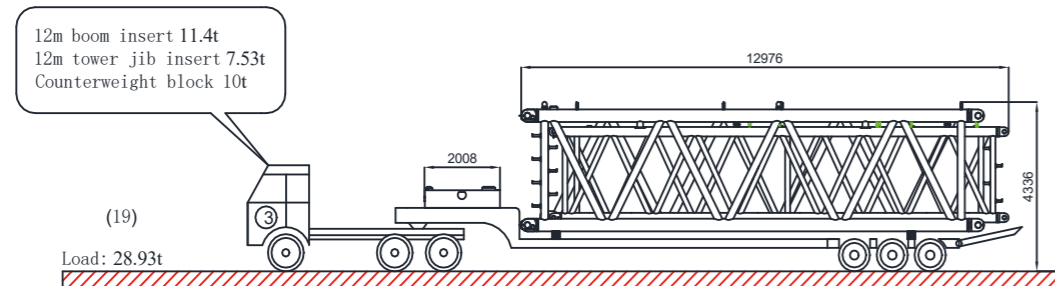
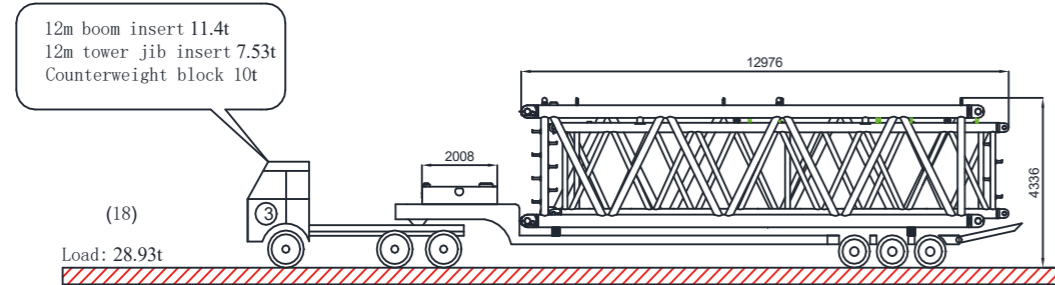
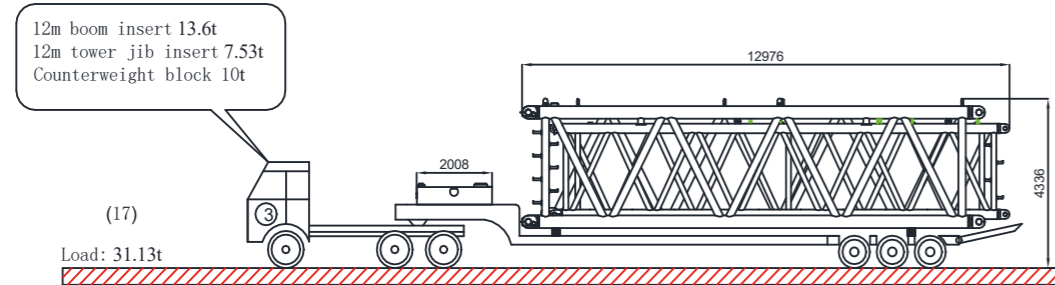
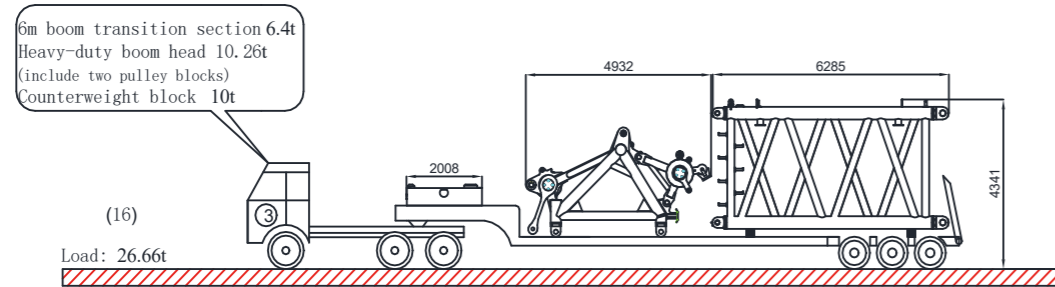
P54-P64 Transport Plan



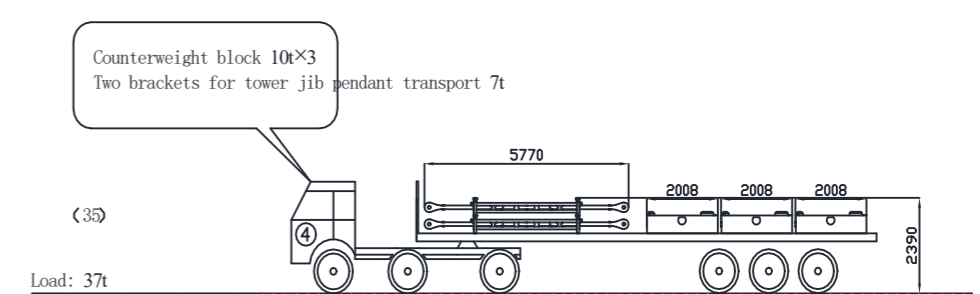
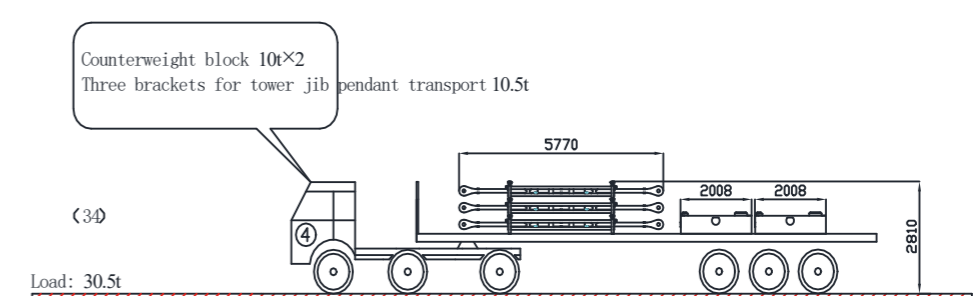
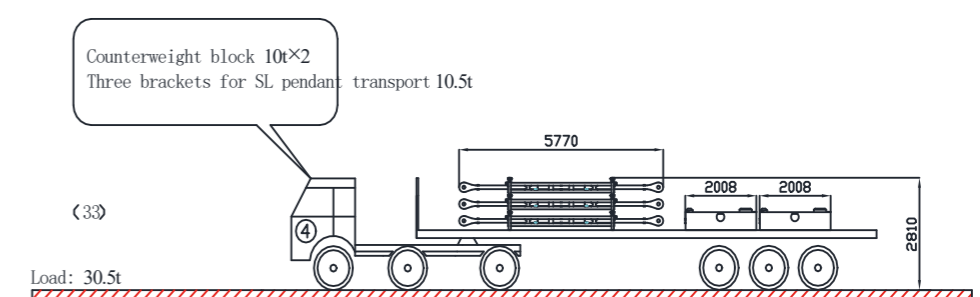
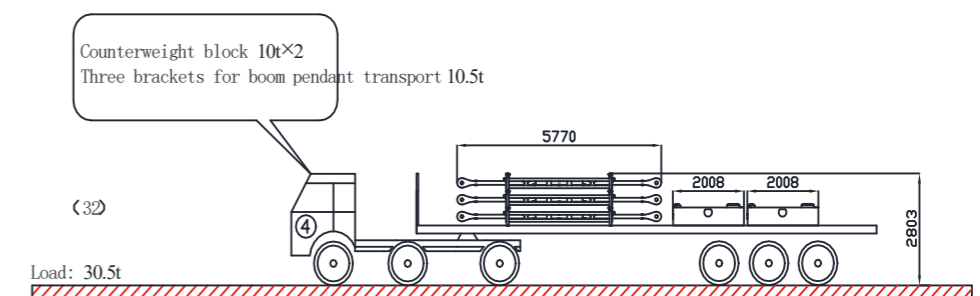
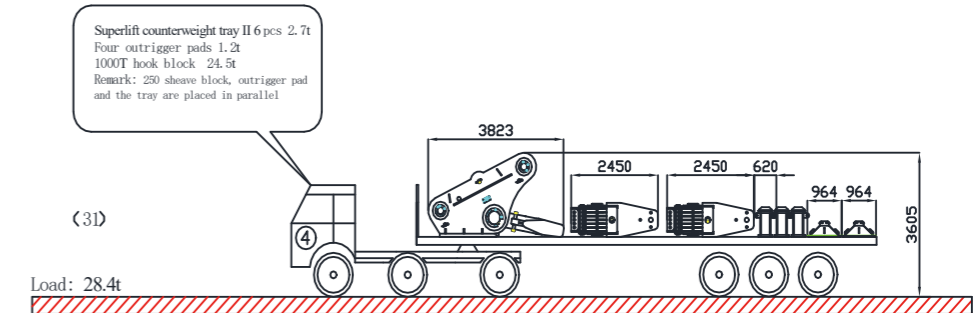
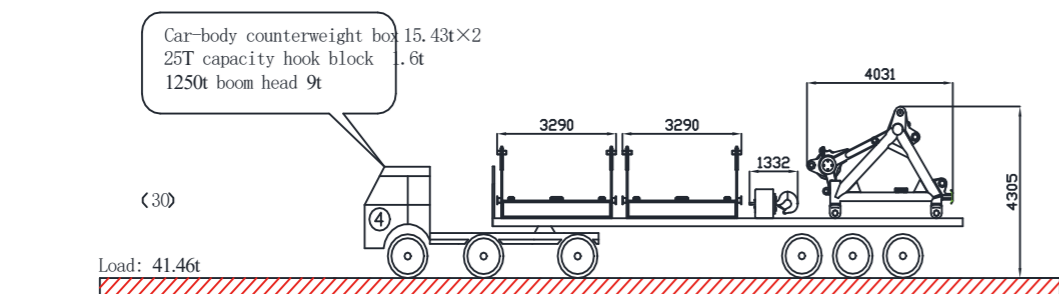
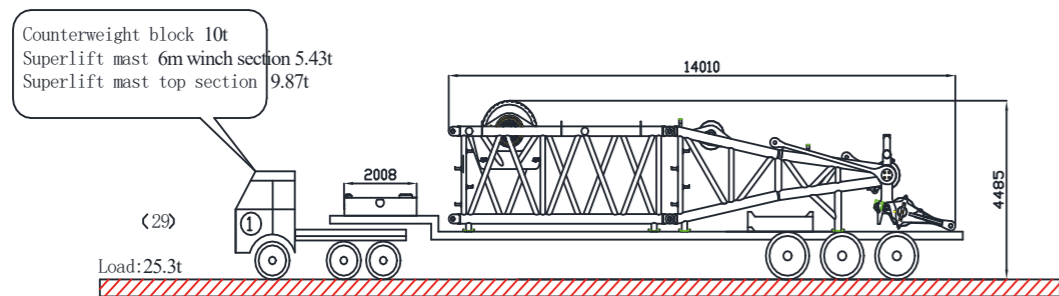
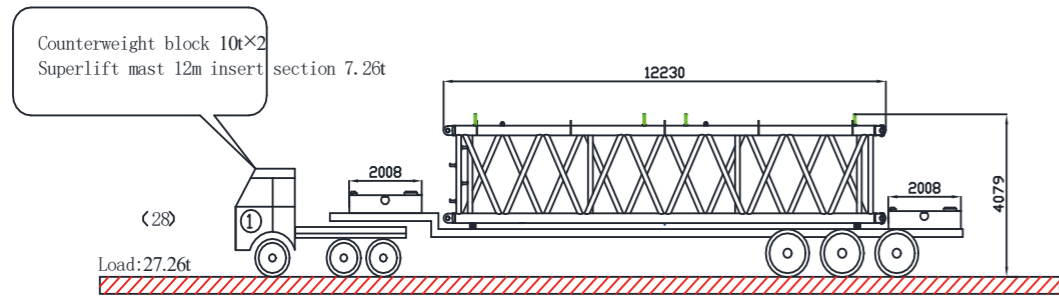
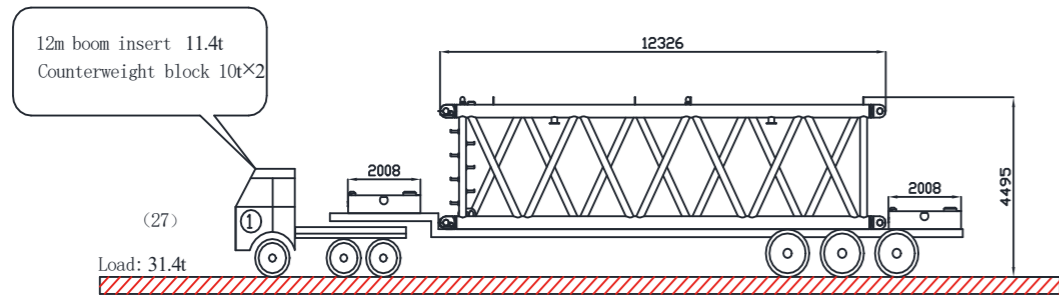
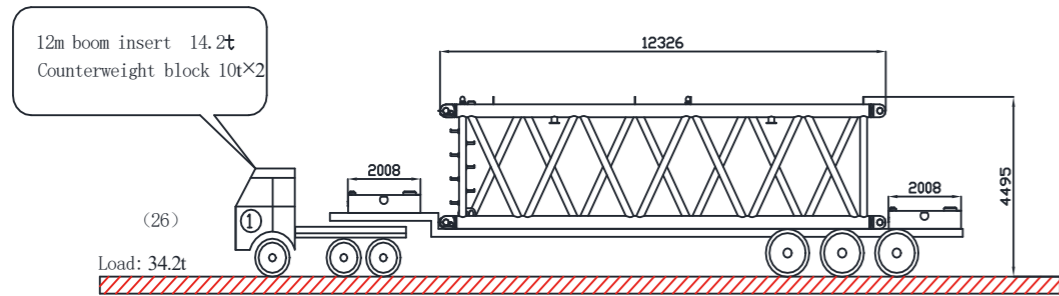
Transport Plan



Transport Plan



Transport Plan



Transport Plan

