

XCMG FOR YOUR SUCCESS

# XE690DK

Hydraulic Excavator

Operating weight: 68,500-74,500 kg    Rated power: 566 kW/2,100 rpm    Bucket capacity: 4.5 m<sup>3</sup>



### Enhanced working equipment with great intensity

Reinforced box-frame with thickened plates and accurate auto-welding technology, ensures the intensity, rigidity and resistance capacity of bending and twisting.



### 4.5 m<sup>3</sup> rock bucket

Penetration force is greatly increased by optimized curved design bucket shape and cutting plate on both sides of bucket. Reinforced plate is adopted on the bucket bottom to enhance durability.

### Parallel dual air filter

Engine will work smoothly in extreme harsh and dusty environment by using parallel dual air filter.

Independent radiating system can realize fan speed intelligent control through analyzing water, inlet air and oil temperatures.

Renewed fiber structure, reinforced column and make the excavator more reliable and durable.



# Working Conditions

Applicable to digging, breaking and loading operation on large coal & metal opencast mines.

## More powerful and efficient

### ▶ Powerful 8-cylinder Weichai engine

Heavy-duty Weichai engine with great power(566 kW/2,100 rpm) large displacement make it have faster response, be more reliable and efficient.

### ▶ Flexible modes in various working environments

N mode	P mode	T mode	B mode
Priority for low fuel consumption	Priority for high working efficiency	High-altitude environment working mode	Breaking mode with Jack Hammer

(1) Default is N mode.

(2) Customary mode will be recorded by computer, the system will automatically switch to selected mode via computer memory when the operator starts it up next time.

### ▶ High efficient hydraulic system

Main pump has features of higher working pressure, larger displacement and faster response speed.

Large diameter main valve is applied to realize more efficient hydraulic distribution and accurate fluid control.

Powerful slewing and driving motors can realize quick response and smooth rotation turntable, and provide stronger tracking force and faster walking speed.

## Comfortable and Safe

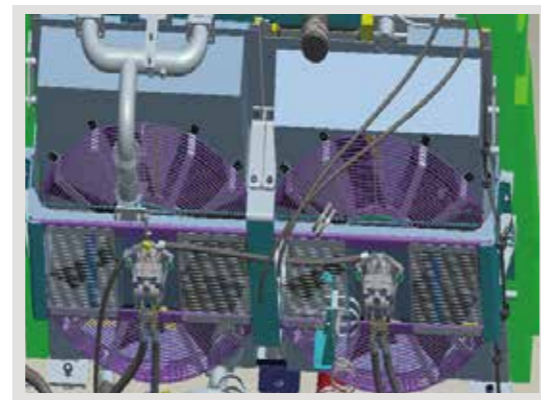
- ▶ The cab has acquired international OPG certificate. Silicone oil shock absorber and guarding fences help to provide a comfortable and safe environment for the operator.
- ▶ Multi-function screen-touch LCD makes it easier for operator to read the machine status and realize the intelligent control of the engine. Besides, a rear view camera is also equipped to realize 360° visualization, power socket maximizes comfort and convenience, combining practicality and fashion.





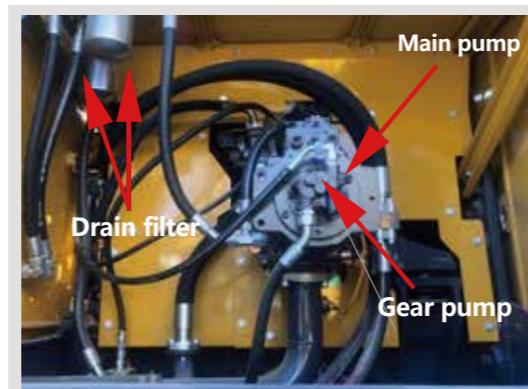
## More environmental-friendly

- ▶ Environmental-friendly engine meets national 3 emission standard with longer warranty and lower fuel consumption.
- ▶ Independent radiating system helps to realize fluid temperature intelligent control of the fluid temperature, which has lower noise, less maintenance cost and high efficiency.
- ▶ Three-stage fuel filtering system, parallel air inlet pre-filter and water separator greatly increase filtering efficiency and extend engine service life.
- ▶ We provide various buckets from 4.5 m<sup>3</sup> for your option, so that customer can choose suitable bucket for different working conditions.



## Easy Maintenance

- ▶ Front and rear split-design of engine hood and air spring help to realize easier maintenance.
- ▶ Engine oil filter, fuel filter and pilot filter are well-arranged at the easy-to-maintain positions with extra space, air filter is installed above pump chamber with an independent door, which is more convenient for maintenance.
- ▶ Split type independent intelligent temperature sensing control system makes it easier to disassemble and maintain.



For diversified construction conditions, we provide customers with

## Multifunctional equipment with reliable quality and advanced performance

Greatly expanding the functions and fully extending the operation scope of the excavator, continuously to create more value and super high profit for you.

### Side jack hammer



Application:  
Cement road and concrete fragmentation, building demolition.

### Olecranon shear



Application:  
Dismantling of scrapped and heavy vehicles, steel structures such as steel plants, metals, ships, and bridges.

### Compactor



Application:  
Highway slope protection, Consolidation of dams and ditches.

### Quick coupler



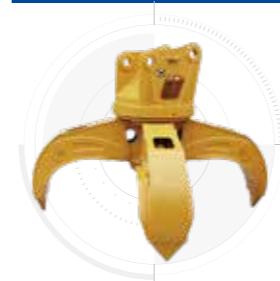
Application:  
Quickly coupled with XCMG diversified attachments.

### Pile driver



Application:  
Medium and short pile projects for bridges, cofferdams wharfs and deep foundation pit support.

### Orange peel grab



Application:  
Loading and dumping of irregular and bulky materials such as scrap iron, pig iron, ore, garbage, etc.

### Pulverizer



Application:  
Secondary crushing of concrete and separation of steel and concrete.

### Double cylinder shear



Application:  
Abandoned factory buildings, cardismantling and other projects.

### Hydraulic grapple



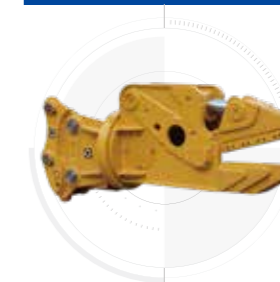
Application:  
Special equipment for loading and dumping wood and stone.

### Hydraulic pilers



Application:  
Grabbing of construction waste, stone, wood and other materials.

### Hydraulic shear



Application:  
Special equipment for dismantling scrapped cars and renewable resources.

### Top side hammer



Application:  
Mines, road crushing, municipal garden renovation, building demolition, reinforced concrete crushing, etc.

## Product specifications

Main specifications	Unit	XE690DK
Operating Weight	kg	68,500-74,500
Bucket Capacity	m <sup>3</sup>	4.5

Engine		
Engine model	/	WP17
Direct injection	/	√
4 Stroke	/	√
Water-cooling	/	√
Turbocharging	/	√
Air-air intercooler	/	√
Number of cylinders	/	8
Engine output power	kW/rpm	566/2,100
Maximum torque/speed	N.m	3,000/(1,200-1,500r/min)
Displacement	L	16.72

Main performance		
Traveling speed	km/h	4.7/2.8
Slewing speed	r/min	7.1
Grade ability	°	≤35
Ground pressure	kPa	106
Bucket digging force	kN	382
Arm digging force	kN	318
Max. traction force	kN	463

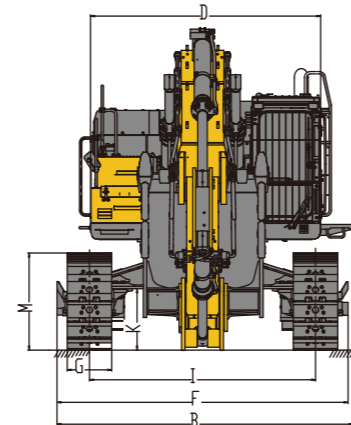
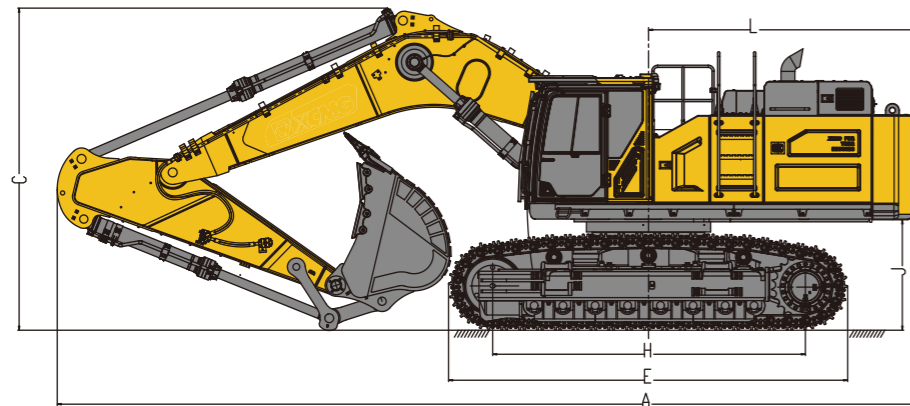
Main specifications	Unit	XE690DK
Fuel capacity		
Fuel tank capacity	L	800
Hydraulic oil tank capacity	L	450
Engine oil capacity	L	56

Hydraulic System		
Main pump	/	Tandem piston pump
Main pump rated flow	L/min	2×462
Pressure of main safety valve	MPa	34.3/37
Traveling system pressure	MPa	34.3
Slewing system pressure	MPa	32
Pilot system pressure	MPa	3.9

Standard		
Length of boom	mm	7,100
Length of arm	mm	2,900
Bucket capacity	m <sup>3</sup>	4.5 (Rock bucket)

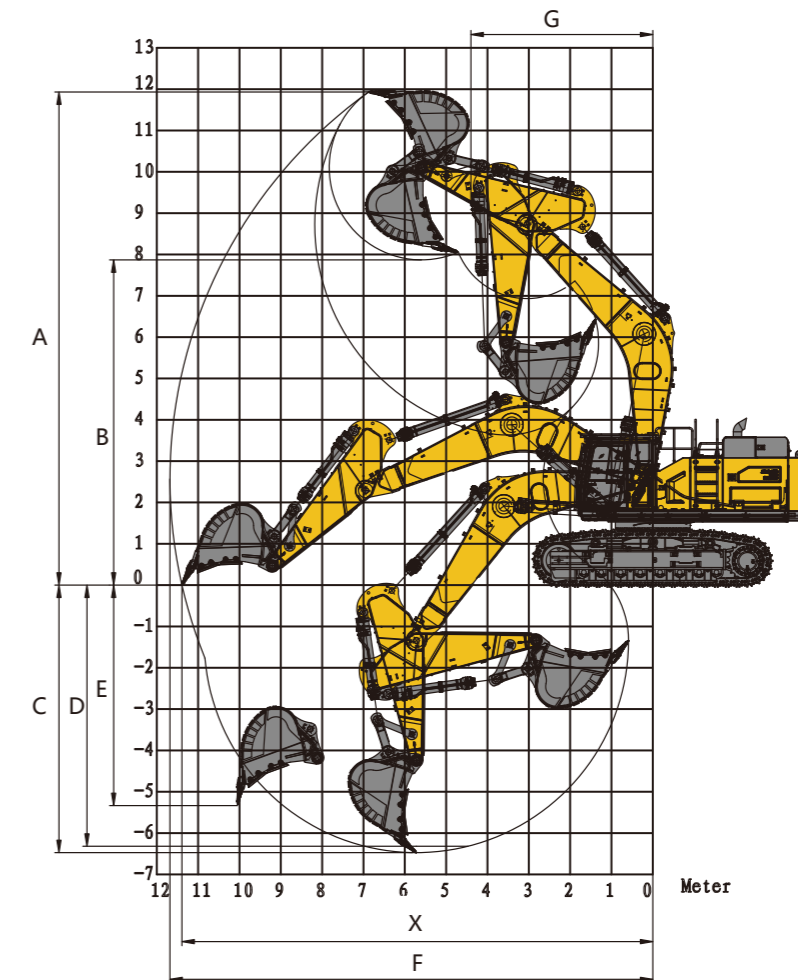
Optional		
Length of boom	mm	-
Length of arm	mm	2,550(breaking)
		4.0 (Rock bucket)
Bucket capacity	m <sup>3</sup>	5.0 (Strengthened bucket)
		4.5 (Super wear-resistant bucket)

Product dimensions	Unit	XE690DK
Overall Dimensions		
A Overall length	mm	12,460
B Overall width	mm	4,320
C Overall height	mm	4,900
D Turntable width	mm	3,360
E Crawler length	mm	5,829
F Chassis total width	mm	4,235(Contracting state3,765)
J Counterweight clearance	mm	1,560
K Minimum ground clearance	mm	850
L Min. Tail swing radius	mm	4,120
M Crawler height	mm	1,429



## Product dimensions

Product dimensions	Unit	XE690DK
Scope of work		
A Max. digging height	mm	12,200
B Max. dumping height	mm	8,030
C Max. digging depth	mm	6,500
D Max. depth cut for 2240mm(8 feet) level bottom	mm	6,350
E Max. vertical digging depth	mm	5,550
F Max. digging reach	mm	11,780
G Min. rotation radius	mm	4,450





# Customization

## Engine

Engine Model	WP17
Engine emission standard	National 3
Manual Preheating	√
Air prefilter (equipped with air filter blocking indicator)	√
Double filter elements of air filter	√
Concentric-drum design engine oil filter	√
Concentric-drum design fuel main filter	√
Fan shield	√
Radiator sub-tank	√
Oil- water separator	√
Alternating current generator	√
Electronic throttle speed control	√

## Hydraulic System

Control valve with main relief valve	√
Pilot filter	√
Oil suction filter	√
Accumulator	√
Boom/arm flow regeneration	√
Hydraulic oil spirax S4 CX 10W_bulk	√
Hydraulic pipes of crusher	⊙
Hydraulic oil Tellus S2 MX68/Spirax S2 VX 32/HS22-1	⊙

## Safety configurations

Door lock of control cabin	√
Alarm horn	√
Travelling brake	√
Rotary parking brake	√
Battery circuit breaker	√
Boom and arm retaining valve	√
Boom and arm pipeline explosion-proof valve	⊙
Flashing lamp	√
Hydraulic safety lock lever	√
Left and right rearview mirror	√
Front working light	√
Counterweight indicator	√
FOPS	√

## Undercarriage

Crawler tensioning mechanism	√
Chassis traction ring	√
Double grouser shoes	√
Chassis bottom sealing shield	√
Walking motor sealing shield	√
Crawler rail clamping device	√
Track roller and carrier roller	√
Retractable chassis	√

## Lighting lamp

Working light on the left & right side of boom	√
Working light on the left & right side of turntable	√
Front working light on control cabin	√

## Control cabin

AM-FM radio	√
Soundproof steel cab	√
Cup holder	√
Two stereo speaker	√
Engine key switch	√
Escape hammer	√
Fire extinguisher holder	√
Fire extinguisher	⊙
Front window detergent	√
Cleanable floor mat	√
Foot-rest pedal	√
Mechanical suspension seat with cloth cover	√
Openable front and top window shield	√
Removable front and bottom window shield	√
Tempered glass sliding window	√
Window shield wiper	√
Safety belt	√
Operating handle	√
Driving control pedal with removable manual joystick	√
Coat hook	√
High and low speed shift	√
AC	√
Cigarette lighter/ Spare battery	√
Sky window	√
Cab light	√
File bag	√
Rearview mirror	√
8-inch touch screen LCD monitor	√

## Working equipment

7.1 m Boom	√
2.9 m Arm	√
4.5 m³ rock bucket	√
Centralized lubrication system	√
Crusher	⊙
Automatic lubrication	√

## Electrical system

2 large capacity batteries	√
High-power starting motor	√
Engine cooling water temperature display	√
Fuel level display	√
Engine speed display	√
Working hours display	√
Coolant high temperature and engine oil pressure display	√
Air filter blockage alarm	√
Engine preheating indication	√
High hydraulic oil temperature alarm	√

## Counterweight

Counterweight	√
---------------	---

√- Standard configuration ⊙- Optional

